

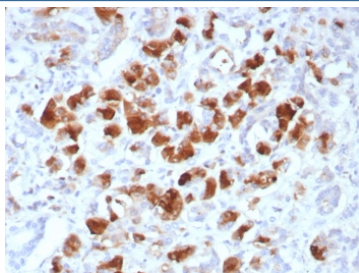
Carboxypeptidase A1 Antibody / CPA1 [clone rCPA1/8518] (V5221)

Catalog No.	Formulation	Size
V5221-100UG	0.2 mg/ml in 1X PBS with 0.1 mg/ml BSA (US sourced), 0.05% sodium azide	100 ug
V5221-20UG	0.2 mg/ml in 1X PBS with 0.1 mg/ml BSA (US sourced), 0.05% sodium azide	20 ug
V5221SAF-100UG	1 mg/ml in 1X PBS; BSA free, sodium azide free	100 ug

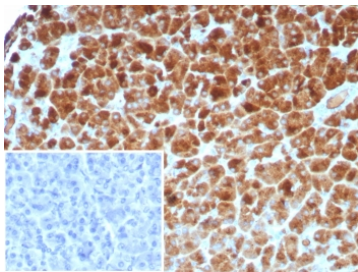
Recombinant **MOUSE MONOCLONAL**

[Bulk quote request](#)

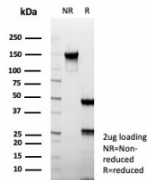
Availability	1-3 business days
Species Reactivity	Human
Format	Purified
Clonality	Recombinant Mouse Monoclonal
Isotype	Mouse IgG1, kappa
Clone Name	rCPA1/8518
Purity	Protein A/G affinity
UniProt	P15085
Localization	Secreted
Applications	Western Blot : 1-2ug/ml Immunohistochemistry (FFPE) : 1-2ug/ml for 30 min at RT
Limitations	This Carboxypeptidase A1 antibody is available for research use only.



IHC staining of FFPE human pancreas tissue with Carboxypeptidase A1 antibody (clone rCPA1/8518). HIER: boil tissue sections in pH 9 10mM Tris with 1mM EDTA for 20 min and allow to cool before testing.



IHC staining of FFPE human pancreas tissue with Carboxypeptidase A1 antibody (clone rCPA1/8518). Inset: PBS used in place of primary Ab (secondary Ab negative control).
HIER: boil tissue sections in pH 9 10mM Tris with 1mM EDTA for 20 min and allow to cool before testing.



SDS-PAGE analysis of purified, BSA-free Carboxypeptidase A1 antibody (clone rCPA1/8518) as confirmation of integrity and purity.

Description

Human pancreatic procarboxypeptidase A exists as three different active forms, two of which are designated carboxypeptidase A1 (CPA1) and carboxypeptidase A2 (CPA2). CPA1, also known as CPA, is a 419 amino acid secreted monomeric protein that is highly expressed in pancreatic tissue. Functioning as a pancreatic exopeptidase, CPA1 uses zinc as a cofactor to catalyze the release of C-terminal amino acids from a variety of proteins, thereby playing a key role in protein digestion and degradation. Via its catalytic activity, CPA1 is also thought to be involved in zymogen (proenzyme) inhibition, probably functioning to block enzyme activation pathways. Abnormal levels of CPA1 are associated with pancreatic cancer, suggesting a possible role in either tumor progression or tumor suppression events.

Application Notes

Optimal dilution of the Carboxypeptidase A1 antibody should be determined by the researcher.

Immunogen

Recombinant full-length human CPA1 protein was used as the immunogen for the Carboxypeptidase A1 antibody.

Storage

Aliquot the Carboxypeptidase A1 antibody and store frozen at -20°C or colder. Avoid repeated freeze-thaw cycles.