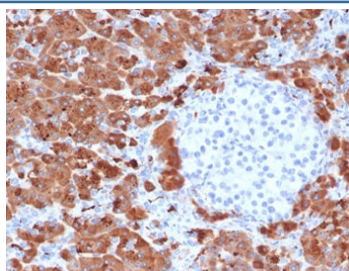


Carboxypeptidase A1 Antibody / CPA1 [clone CBPA1-1] (V7433)

Catalog No.	Formulation	Size
V7433-100UG	0.2 mg/ml in 1X PBS with 0.1 mg/ml BSA (US sourced) and 0.05% sodium azide	100 ug
V7433-20UG	0.2 mg/ml in 1X PBS with 0.1 mg/ml BSA (US sourced) and 0.05% sodium azide	20 ug
V7433SAF-100UG	1 mg/ml in 1X PBS; BSA free, sodium azide free	100 ug
V7433IHC-7ML	Prediluted in 1X PBS with 0.1 mg/ml BSA (US sourced) and 0.05% sodium azide; *For IHC use only*	7 ml

[Bulk quote request](#)

Availability	1-3 business days
Species Reactivity	Human; Other species not tested.
Format	Purified
Clonality	Monoclonal (mouse origin)
Isotype	Mouse IgG1, kappa
Clone Name	CBPA1-1
Purity	Protein G affinity
UniProt	P15085
Localization	Cytoplasmic, secreted
Applications	Immunohistochemistry (FFPE) : 1-2ug/ml for 30 min at RT Prediluted IHC Only Format : incubate for 30 min at RT (1)
Limitations	This Carboxypeptidase A1 antibody is available for research use only.



IHC testing of FFPE human pancreas with Carboxypeptidase A1 antibody (clone CBPA1-1). HIER: boil tissue sections in pH6, 10mM citrate buffer, for 10-20 min followed by cooling at RT for 20 min.

Description

The CPA1 gene encodes Carboxypeptidase A1, a member of the carboxypeptidase A family of zinc metalloproteases. This enzyme is produced in the pancreas and preferentially cleaves C-terminal branched-chain and aromatic amino acids from dietary proteins. This gene and several family members are present in a gene cluster on chromosome 7. Mutations in this gene may be linked to chronic pancreatitis, while elevated protein levels may be associated with pancreatic cancer. [RefSeq]

Application Notes

Optimal dilution of the Carboxypeptidase A1 antibody should be determined by the researcher.

1. The prediluted format is supplied in a dropper bottle and is optimized for use in IHC. After epitope retrieval step (if required), drip mAb solution onto the tissue section and incubate at RT for 30 min.

Immunogen

Full length recombinant human protein was used as the immunogen for the Carboxypeptidase A1 antibody.

Storage

Store the Carboxypeptidase A1 antibody at 2-8°C (with azide) or aliquot and store at -20°C or colder (without azide).