

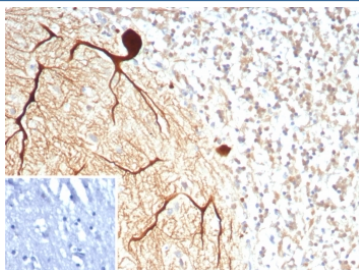
Carbonic Anhydrase VIII Antibody / CA8 [clone CA8/8605R] (V5246)

Catalog No.	Formulation	Size
V5246-100UG	0.2 mg/ml in 1X PBS with 0.1 mg/ml BSA (US sourced), 0.05% sodium azide	100 ug
V5246-20UG	0.2 mg/ml in 1X PBS with 0.1 mg/ml BSA (US sourced), 0.05% sodium azide	20 ug
V5246SAF-100UG	1 mg/ml in 1X PBS; BSA free, sodium azide free	100 ug

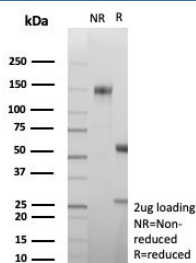
Recombinant **RABBIT MONOCLONAL**

[Bulk quote request](#)

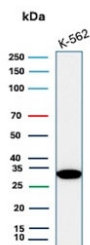
Availability	1-3 business days
Species Reactivity	Human
Format	Purified
Clonality	Recombinant Rabbit Monoclonal
Isotype	Rabbit IgG, kappa
Clone Name	CA8/8605R
Purity	Protein A/G affinity
UniProt	P35219
Localization	Cytoplasm, Cell surface
Applications	Immunohistochemistry (FFPE) : 1-2ug/ml for 30 min at RT Western Blot : 2-4ug/ml
Limitations	This Carbonic Anhydrase VIII antibody is available for research use only.



IHC staining of FFPE human brain tissue with Carbonic Anhydrase VIII antibody (clone CA8/8605R). Inset: PBS used in place of primary Ab (secondary Ab negative control).
HIER: boil tissue sections in pH 9 10mM Tris with 1mM EDTA for 20 min and allow to cool before testing.



SDS-PAGE analysis of purified, BSA-free Carbonic Anhydrase VIII antibody (clone CA8/8605R) as confirmation of integrity and purity.



Western blot testing of human K562 cell lysate with Carbonic Anhydrase VIII antibody.

Description

The protein encoded by this gene was initially named CA-related protein because of sequence similarity to other known carbonic anhydrase genes. However, the gene product lacks carbonic anhydrase activity (i.e., the reversible hydration of carbon dioxide). The gene product continues to carry a carbonic anhydrase designation based on clear sequence identity to other members of the carbonic anhydrase gene family. The absence of CA8 gene transcription in the cerebellum of the *lurcher* mutant in mice with a neurologic defect suggests an important role for this acatalytic form. Mutations in CA8 gene causes neuropathology, such as ataxia, mild mental retardation and the predisposition to quadrupedal gait. It is also associated with the development of colorectal and lung cancers. Additionally, it is upregulated in various cancers.

Application Notes

Optimal dilution of the Carbonic Anhydrase VIII antibody should be determined by the researcher.

Immunogen

Recombinant full-length human protein was used as the immunogen for the Carbonic Anhydrase VIII antibody.

Storage

Aliquot the Carbonic Anhydrase VIII antibody and store frozen at -20°C or colder. Avoid repeated freeze-thaw cycles.