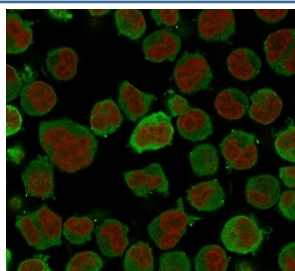


Calponin Antibody [clone CLPN5-1] (V7050)

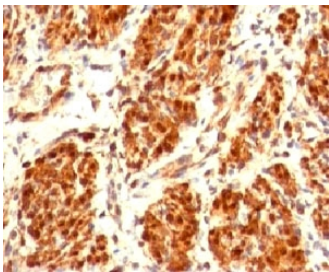
Catalog No.	Formulation	Size
V7050-100UG	0.2 mg/ml in 1X PBS with 0.1 mg/ml BSA (US sourced) and 0.05% sodium azide	100 ug
V7050-20UG	0.2 mg/ml in 1X PBS with 0.1 mg/ml BSA (US sourced) and 0.05% sodium azide	20 ug
V7050SAF-100UG	1 mg/ml in 1X PBS; BSA free, sodium azide free	100 ug
V7050IHC-7ML	Prediluted in 1X PBS with 0.1 mg/ml BSA (US sourced) and 0.05% sodium azide; *For IHC use only*	7 ml

[Bulk quote request](#)

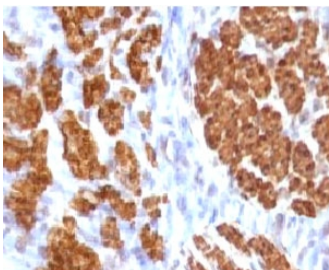
Availability	1-3 business days
Species Reactivity	Human, Rat
Format	Purified
Clonality	Monoclonal (mouse origin)
Isotype	Mouse IgG1, kappa
Clone Name	CLPN5-1
Purity	Protein G affinity chromatography
UniProt	P51911
Localization	Cytoplasmic
Applications	Immunofluorescence : 1-2ug/ml Immunohistochemistry (FFPE) : 1-2ug/ml for 30 min at RT Prediluted IHC Only Format : incubate for 30 min at RT (1)
Limitations	This Calponin antibody is available for research use only.



Immunofluorescent staining of PFA-fixed human K562 cells with Calponin antibody (green, clone CLPN5-1) and Reddot nuclear stain (red).



IHC testing of FFPE human uterus and Calponin antibody (clone CLPN5-1). Staining of formalin-fixed tissues requires boiling tissue sections in 10mM Tris with 1mM EDTA, pH 9, for 10-20 min followed by cooling at RT for 20 min.



IHC testing of FFPE rat uterus and Calponin antibody (clone CLPN5-1). Staining of formalin-fixed tissues requires boiling tissue sections in 10mM Tris with 1mM EDTA, pH 9, for 10-20 min followed by cooling at RT for 20 min.

Description

Calponin is a calmodulin, F-actin and tropomyosin binding protein which is thought to be involved in the regulation of smooth muscle contraction. Calponin expression is restricted to smooth muscle cells and has been shown to be a marker of the differentiated (contractile) phenotype of developing smooth muscle.

Application Notes

Optimal dilution of the Calponin antibody should be determined by the researcher.

1. The prediluted format is supplied in a dropper bottle and is optimized for use in IHC. After epitope retrieval step (if required), drip mAb solution onto the tissue section and incubate at RT for 30 min.

Immunogen

Recombinant human protein was used as the immunogen for the Calponin antibody.

Storage

Store the Calponin antibody at 2-8oC (with azide) or aliquot and store at -20oC or colder (without azide).