

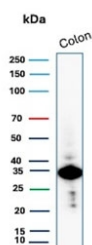
Calponin 1 Antibody / CNN1 [clone CNN1/8870R] (V4589)

Catalog No.	Formulation	Size
V4589-100UG	0.2 mg/ml in 1X PBS with 0.1 mg/ml BSA (US sourced), 0.05% sodium azide	100 ug
V4589-20UG	0.2 mg/ml in 1X PBS with 0.1 mg/ml BSA (US sourced), 0.05% sodium azide	20 ug
V4589SAF-100UG	1 mg/ml in 1X PBS; BSA free, sodium azide free	100 ug

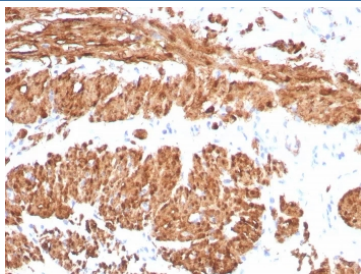
Recombinant **RABBIT MONOCLONAL**

[Bulk quote request](#)

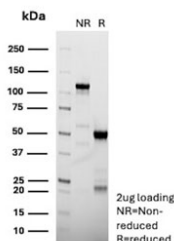
Availability	1-3 business days
Species Reactivity	Human
Format	Purified
Clonality	Recombinant Rabbit Monoclonal
Isotype	Rabbit IgG, kappa
Clone Name	CNN1/8870R
Purity	Protein A/G affinity
UniProt	P51911
Localization	Cytoplasm
Applications	Immunohistochemistry (FFPE) : 1-2ug/ml for 30 min at RT Western Blot : 2-4ug/ml
Limitations	This Calponin 1 antibody is available for research use only.



Western blot testing of human colon tissue lysate with Calponin 1 antibody. Predicted molecular weight ~34 kDa.



IHC staining of FFPE human smooth muscle tissue with Calponin antibody (clone CNN1/8870R). HIER: boil tissue sections in pH 9 10mM Tris with 1mM EDTA for 20 min and allow to cool before testing.



SDS-PAGE analysis of purified, BSA-free Calponin 1 antibody (clone CNN1/8870R) as confirmation of integrity and purity.

Description

Calponin a 33 kDa polypeptide, is a cytoskeleton-associated actin-binding protein that also interacts tropomyosin and calmodulin. Calponin antibody has been found to be useful as a marker for myoepithelial and basal lamina in differentiating microinvasive from in situ ductal carcinomas of the breast. Calponin antibody may also have applications in malignant myoepithelium and pleomorphic adenoma of salivary gland as well as a useful marker for fine needle aspirates of papillary breast lesions. The antibody has been found in tissue extracts from smooth muscle, but not in fibroblast extracts.

Application Notes

Optimal dilution of the Calponin 1 antibody should be determined by the researcher.

Immunogen

A recombinant fragment corresponding to the human protein was used as the immunogen for the Calponin 1 antibody.

Storage

Aliquot the Calponin 1 antibody and store frozen at -20°C or colder. Avoid repeated freeze-thaw cycles.