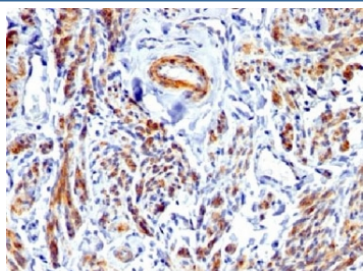


Caldesmon Antibody / CALD1 / CAD (HMW) (V3231)

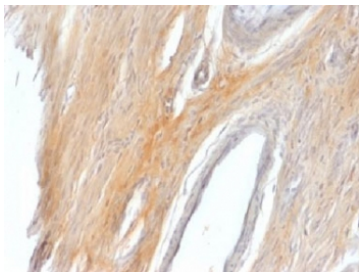
Catalog No.	Formulation	Size
V3231-100UG	0.2 mg/ml in 1X PBS with 0.1 mg/ml BSA (US sourced) and 0.05% sodium azide	100 ug
V3231-20UG	0.2 mg/ml in 1X PBS with 0.1 mg/ml BSA (US sourced) and 0.05% sodium azide	20 ug
V3231SAF-100UG	1 mg/ml in 1X PBS; BSA free, sodium azide free	100 ug

Bulk quote request

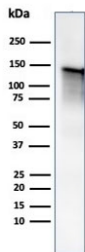
Availability	1-3 business days
Species Reactivity	Human, Rat
Format	Purified
Clonality	Polyclonal (rabbit origin)
Isotype	Rabbit IgG
Purity	Protein A affinity chromatography
UniProt	Q05682
Localization	Cytoplasmic
Applications	Immunohistochemistry (FFPE) : 1-2ug/ml for 30 min at RT Western Blot : 1-2ug/ml
Limitations	This Caldesmon antibody is available for research use only.



IHC testing of FFPE human uterus with recombinant Caldesmon antibody. Required HIER: boil tissue sections in 1mM EDTA, pH 7.5-8.5, for 10-20 min.



IHC testing of FFPE rat uterus with recombinant Caldesmon antibody. Required HIER: boil tissue sections in 1mM EDTA, pH 7.5-8.5, for 10-20 min.



Western blot testing of human ovary tissue lysate using Caldesmon antibody. Predicted molecular weight ~93 kDa, can be observed at 70-80 kDa (non muscle tissue) and 120-150 kDa (smooth muscle).

Description

Caldesmon is a developmentally regulated protein involved in smooth muscle and non-muscle contraction.

Application Notes

Titration of the Caldesmon antibody may be required for optimal performance.

Immunogen

A partial human protein was used as the immunogen for the Caldesmon antibody.

Storage

Store the Caldesmon antibody at 2-8°C (with azide) or aliquot and store at -20°C or colder (without azide).