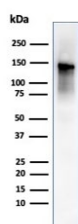


Caldesmon Antibody / CALD1 / CAD (HMW) [clone SPM168] (V2941)

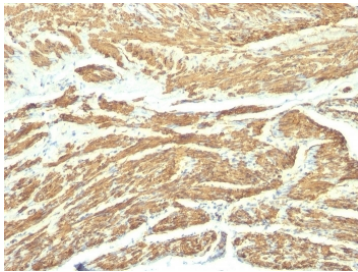
Catalog No.	Formulation	Size
V2941-100UG	0.2 mg/ml in 1X PBS with 0.1 mg/ml BSA (US sourced) and 0.05% sodium azide	100 ug
V2941-20UG	0.2 mg/ml in 1X PBS with 0.1 mg/ml BSA (US sourced) and 0.05% sodium azide	20 ug
V2941SAF-100UG	1 mg/ml in 1X PBS; BSA free, sodium azide free	100 ug
V2941IHC-7ML	Prediluted in 1X PBS with 0.1 mg/ml BSA (US sourced) and 0.05% sodium azide; *For IHC use only*	7 ml

[Bulk quote request](#)

Availability	1-3 business days
Species Reactivity	Human
Format	Purified
Clonality	Monoclonal (mouse origin)
Isotype	Mouse IgG1, kappa
Clone Name	SPM168
Purity	Protein G affinity chromatography
UniProt	Q05682
Localization	Cytoplasmic
Applications	Immunohistochemistry (FFPE) : 1-2ug/ml for 30 min at RT Western Blot : 1-2ug/ml
Limitations	This Caldesmon antibody is available for research use only.



Western blot testing of human ovary tissue lysate using Caldesmon antibody (clone rCALD1/820). Predicted molecular weight ~93 kDa, can be observed at 70-80 kDa (non muscle tissue) and 120-150 kDa (smooth muscle).



IHC: Formalin-fixed, paraffin-embedded human uterus stained with Caldesmon antibody (clone SPM168).

Description

Recognizes a protein of 150kDa, which is identified as the high molecular weight variant of Caldesmon. Two closely related variants of human caldesmon have been identified which are different in their electrophoretic mobility and cellular distribution. The h-caldesmon variant (120-150kDa) is predominantly expressed in smooth muscle whereas l-caldesmon (70-80kDa) is found in non-muscle tissue and cells. Neither of the two variants has been detected in skeletal muscle. Caldesmon is a developmentally regulated protein involved in smooth muscle and non-muscle contraction.

Application Notes

Optimal dilution of the Caldesmon antibody should be determined by the researcher.

1. Staining of formalin-fixed tissues requires boiling tissue sections in 10mM Tris with 1mM EDTA, pH 9, for 10-20 min followed by cooling at RT for 20 min.
2. The prediluted format is supplied in a dropper bottle and is optimized for use in IHC. After epitope retrieval step (if required), drip mAb solution onto the tissue section and incubate at RT for 30 min.

Immunogen

Crude human uterus extract was used as the immunogen for the Caldesmon antibody.

Storage

Store the Caldesmon antibody at 2-8°C (with azide) or aliquot and store at -20°C or colder (without azide).