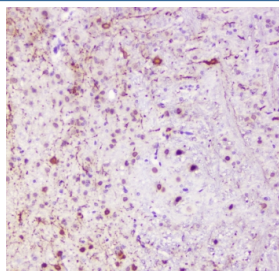


Calbindin Antibody (RQ4541)

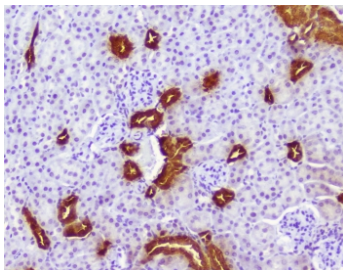
Catalog No.	Formulation	Size
RQ4541	0.5mg/ml if reconstituted with 0.2ml sterile DI water	100 ug

Bulk quote request

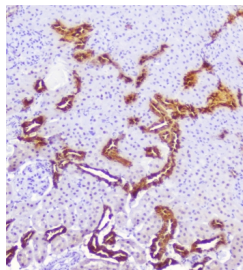
Availability	1-3 business days
Species Reactivity	Human, Mouse, Rat
Format	Antigen affinity purified
Clonality	Polyclonal (rabbit origin)
Isotype	Rabbit IgG
Purity	Antigen affinity purified
Buffer	Lyophilized from 1X PBS with 2% Trehalose and 0.025% sodium azide
UniProt	P05937
Localization	Cytoplasmic, nuclear
Applications	Western Blot : 0.5-1ug/ml IHC (FFPE) : 1-2ug/ml Flow Cytometry : 1-3ug/million cells Immunofluorescence : 5ug/ml Direct ELISA : 0.1-0.5ug/ml (recombinant human protein)
Limitations	This Calbindin antibody is available for research use only.



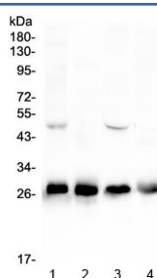
IHC staining of FFPE mouse brain with Calbindin antibody at 1ug/ml. HIER: boil tissue sections in pH6, 10mM citrate buffer, for 10-20 min followed by cooling at RT for 20 min.



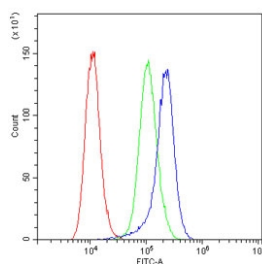
IHC staining of FFPE mouse kidney with Calbindin antibody at 1ug/ml. HIER: boil tissue sections in pH6, 10mM citrate buffer, for 10-20 min followed by cooling at RT for 20 min.



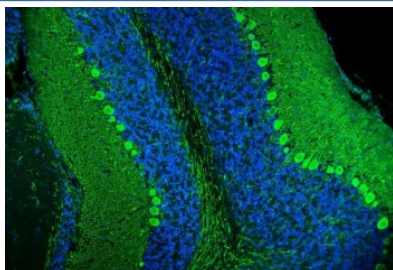
IHC staining of FFPE rat kidney with Calbindin antibody at 1ug/ml. HIER: boil tissue sections in pH6, 10mM citrate buffer, for 10-20 min followed by cooling at RT for 20 min.



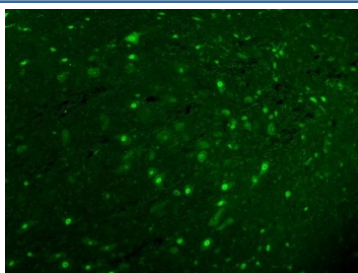
Western blot testing of 1) rat brain, 2) rat kidney, 3) mouse brain and 4) mouse kidney lysate with Calbindin antibody at 0.5ug/ml. Predicted molecular weight: ~30 kDa, routinely observed at 27-28 kDa.



Flow cytometry testing of human A431 cells with Calbindin antibody at 1ug/million cells (blocked with goat sera); Red=cells alone, Green=isotype control, Blue= Calbindin antibody.



Immunofluorescent staining of FFPE rat cerebellum tissue with Calbindin antibody (green) and DAPI nuclear stain (blue). HIER: steam section in pH8 EDTA for 20 min.



Immunofluorescent staining of FFPE rat cerebellum tissue with Calbindin antibody. HIER: steam section in pH8 EDTA for 20 min.

Description

Calbindin is a calcium-binding protein belonging to the troponin C superfamily. And it mapped to 8q21.3. Calretinin is expressed in central and peripheral nervous system and in many normal and pathological tissues. The rat and human calretinin exhibit 98% sequence homology and 91% homology to many other species. Two calcium binding proteins, calbindin and calretinin, have been reported to be expressed in abundance in Purkinje cells and other cell types in the cerebellum.

Application Notes

Optimal dilution of the Calbindin antibody should be determined by the researcher.

Immunogen

Amino acids A2-N261 from the human protein were used as the immunogen for the Calbindin antibody.

Storage

After reconstitution, the Calbindin antibody can be stored for up to one month at 4°C. For long-term, aliquot and store at -20°C. Avoid repeated freezing and thawing.