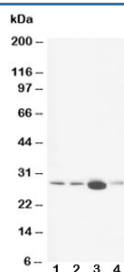


Calbindin Antibody / CALB1 [clone CB-955] (R30006)

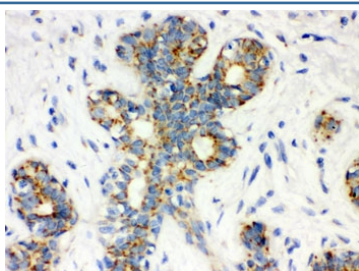
Catalog No.	Formulation	Size
R30006	0.5mg/ml with 1% BSA and 0.01% sodium azide if reconstituted with 0.2ml sterile 1X PBS	100 ug

[Bulk quote request](#)

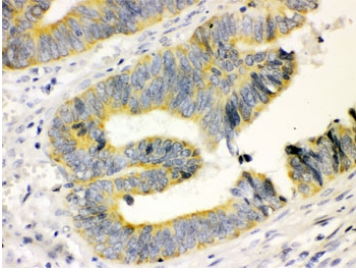
Availability	1-3 business days
Species Reactivity	Human, Mouse, Rat, Bovine
Format	Ascites
Clonality	Monoclonal (mouse origin)
Isotype	Mouse IgG1
Clone Name	CB-955
Gene ID	793
Localization	Cytoplasmic
Applications	Western Blot : 0.5-1ug/ml IHC (FFPE) : 1-2ug/ml Immunofluorescence : 2-4ug/ml
Limitations	This Calbindin antibody is available for research use only.



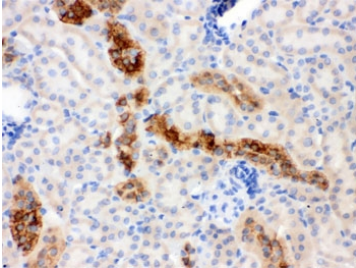
Western blot testing of Calbindin antibody and Lane 1: rat brain; 2: rat brain; 3: rat kidney; 4: rat lung tissue lysate. Expected molecular weight: 27-28 kDa.



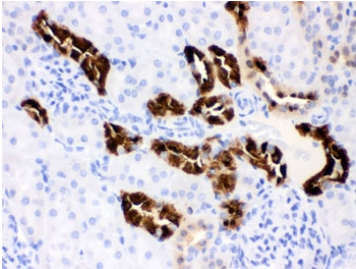
IHC testing of FFPE human breast cancer tissue with Calbindin antibody. HIER: Boil the paraffin sections in pH 6, 10mM citrate buffer for 20 minutes and allow to cool prior to testing.



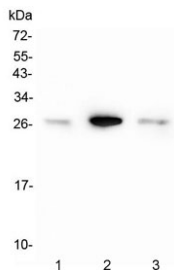
IHC testing of FFPE human intestinal cancer tissue with Calbindin antibody. HIER: Boil the paraffin sections in pH 6, 10mM citrate buffer for 20 minutes and allow to cool prior to testing.



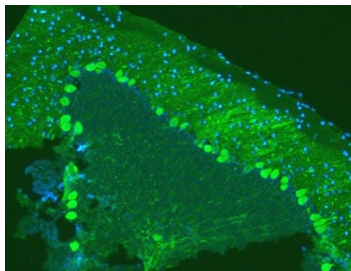
IHC testing of FFPE mouse kidney with Calbindin antibody. HIER: Boil the paraffin sections in pH 6, 10mM citrate buffer for 20 minutes and allow to cool prior to testing.



IHC testing of FFPE rat kidney with Calbindin antibody. HIER: Boil the paraffin sections in pH 6, 10mM citrate buffer for 20 minutes and allow to cool prior to testing.



Western blot testing of Calbindin antibody and Lane 1: rat brain; 2: rat brain; 3: mouse brain tissue lysate. Expected molecular weight: 27-28 kDa.



Immunofluorescent testing of FFPE mouse brain with Calbindin antibody (green) and DAPI (blue). HIER: Boil the paraffin sections in pH 6, 10mM citrate buffer for 20 minutes and allow to cool prior to testing.

Description

The human calbindin D28k (CALB1) is a calcium-binding protein belonging to the troponin C superfamily. It was originally described as a 27-kD protein induced by vitamin D in the duodenum of the chick. Parmentier et al.(1991) mapped the CALB1 gene to 8q21.3-q22.1 by in situ hybridization.

Application Notes

Titration of the Calbindin antibody may be required due to differences in protocols and secondary/substrate sensitivity.

Immunogen

Bovine kidney calbindin was used as the immunogen for this Calbindin antibody.

Storage

The lyophilized Calbindin antibody can be stored at 4oC to -20oC. After reconstitution, aliquot and store at -20oC. Avoid repeated freezing and thawing.