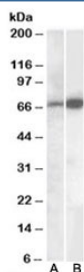


CADM4 Antibody (R35577)

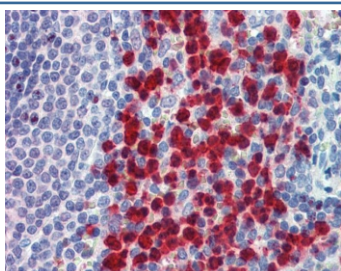
Catalog No.	Formulation	Size
R35577-100UG	0.5 mg/ml in 1X TBS, pH7.3, with 0.5% BSA (US sourced) and 0.02% sodium azide	100 ug

[Bulk quote request](#)

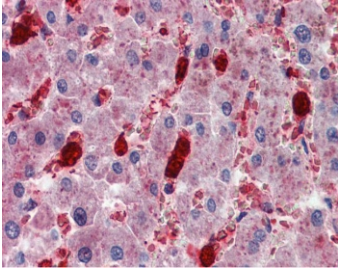
Availability	1-3 business days
Species Reactivity	Human
Predicted Reactivity	Mouse, Rat, Dog
Format	Antigen affinity purified
Clonality	Polyclonal (goat origin)
Isotype	Goat Ig
Purity	Antigen affinity
Gene ID	199731
Applications	Western Blot : 0.1-0.3ug/ml IHC (FFPE) : 2.5ug/ml ELISA (peptide) LOD : 1:32000
Limitations	This CADM4 antibody is available for research use only.



Western blot testing of human cerebellum lysate with CADM4 antibody A) cat # [R34370](#) (0.1ug/ml) and B) cat # R35577 (0.05ug/ml). Predicted molecular weight: ~43 kDa (unmodified), 50-70 kDa (glycosylated).



IHC testing of FFPE human spleen tissue with CADM4 antibody at 2.5ug/ml. Required HIER: steamed antigen retrieval with pH6 citrate buffer; AP-staining.



IHC testing of FFPE human liver tissue with CADM4 antibody at 2.5ug/ml. Required HIER: steamed antigen retrieval with pH6 citrate buffer; AP-staining.

Description

Additional name(s) for this target protein: Cell adhesion molecule 4

Application Notes

Optimal dilution of the CADM4 antibody should be determined by the researcher.

Immunogen

Amino acids REAFLNGSDGHRKE were used as the immunogen for this CADM4 antibody.

Storage

Aliquot and store the CADM4 antibody at -20oC.