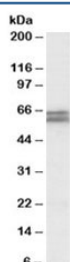


CADM1 Antibody (R34862)

Catalog No.	Formulation	Size
R34862-100UG	0.5 mg/ml in 1X TBS, pH7.3, with 0.5% BSA (US sourced) and 0.02% sodium azide	100 ug

[Bulk quote request](#)

Availability	1-3 business days
Species Reactivity	Human
Predicted Reactivity	Cow, Dog, Mouse, Rat
Format	Antigen affinity purified
Clonality	Polyclonal (goat origin)
Isotype	Goat Ig
Purity	Antigen affinity
Gene ID	23705
Applications	Western Blot : 1-3ug/ml ELISA (peptide) LOD : 1:128000
Limitations	This CADM1 antibody is available for research use only.



Western blot testing of human colorectal cancer lysate with CADM1 antibody at 1ug/ml. Predicted molecular weight: ~48/37kDa (isoforms 1/2) with N-linked and O-linked glycosylation each possibly adding ~25kDa to the observed size.

Description

Additional name(s) for this target protein: Cell adhesion molecule 1

Application Notes

Optimal dilution of the CADM1 antibody should be determined by the researcher.

Immunogen

Amino acids NLQTQRYLEVQ were used as the immunogen for this CADM1 antibody.

Storage

Aliquot and store the CADM1 antibody at -20oC.