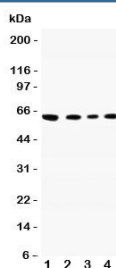


## CADM1 Antibody (R31418)

Catalog No.	Formulation	Size
R31418	0.5mg/ml if reconstituted with 0.2ml sterile DI water	100 ug

**Bulk quote request**

<b>Availability</b>	1-3 business days
<b>Species Reactivity</b>	Human, Mouse, Rat
<b>Format</b>	Antigen affinity purified
<b>Clonality</b>	Polyclonal (rabbit origin)
<b>Isotype</b>	Rabbit IgG
<b>Purity</b>	Antigen affinity
<b>Buffer</b>	Lyophilized from 1X PBS with 2.5% BSA and 0.025% sodium azide/thimerosal
<b>UniProt</b>	Q9BY67
<b>Applications</b>	Western Blot : 0.5-1ug/ml
<b>Limitations</b>	This CADM1 antibody is available for research use only.



Western blot testing of CADM1 antibody and Lane 1: A549; 2: Jurkat; 3: Raji; 4: HeLa lysate. Predicted molecular weight: ~48/37kDa (isoforms 1/2) with N-linked and O-linked glycosylation each possibly adding ~25kDa to the observed size.

## Description

Cell adhesion molecule 1 is a protein that, in humans, is encoded by the CADM1 gene. This gene is also known as IGSF4, SYNCAM or TSLC1, and it is mapped to 11q23.3. It functions as a homophilic cell adhesion molecule at the synapse. Expression of the isolated cytoplasmic tail of CADM1 in neurons inhibited synapse assembly. Conversely, expression of full-length protein in non-neuronal cells induced synapse formation by cocultured hippocampal neurons with normal release properties. It has been shown to interact with EPB41L3.

## Application Notes

The stated application concentrations are suggested starting amounts. Titration of the CADM1 antibody may be required

due to differences in protocols and secondary/substrate sensitivity.

## **Immunogen**

An amino acid sequence from the N-terminus of human SynCAM/CADM1 (VIQLLNPNRQTIYFRDFRPL) was used as the immunogen for this CADM1 antibody (100% homologous in human, mouse and rat).

## **Storage**

After reconstitution, the CADM1 antibody can be stored for up to one month at 4°C. For long-term, aliquot and store at -20°C. Avoid repeated freezing and thawing.