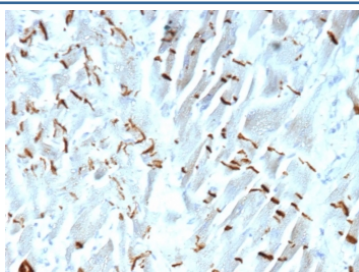


## Cadherin 2 Antibody / N-Cadherin / CDH2 [clone CDH2/9490] (V5632)

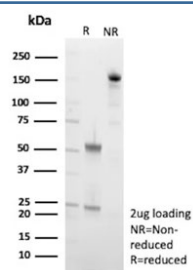
Catalog No.	Formulation	Size
V5632-100UG	0.2 mg/ml in 1X PBS with 0.1 mg/ml BSA (US sourced), 0.05% sodium azide	100 ug
V5632-20UG	0.2 mg/ml in 1X PBS with 0.1 mg/ml BSA (US sourced), 0.05% sodium azide	20 ug
V5632SAF-100UG	1 mg/ml in 1X PBS; BSA free, sodium azide free	100 ug

[Bulk quote request](#)

<b>Availability</b>	1-3 business days
<b>Species Reactivity</b>	Human
<b>Format</b>	Purified
<b>Clonality</b>	Monoclonal (mouse origin)
<b>Isotype</b>	Mouse IgG2b, kappa
<b>Clone Name</b>	CDH2/9490
<b>Purity</b>	Protein G affinity
<b>UniProt</b>	P19022
<b>Localization</b>	Cell surface, Cytoplasmic
<b>Applications</b>	Immunohistochemistry (FFPE) : 1-2ug/ml
<b>Limitations</b>	This Cadherin 2 antibody is available for research use only.



IHC staining of FFPE human heart tissue with Cadherin 2 antibody (clone CDH2/9490).  
 HIER: boil tissue sections in pH 9 10mM Tris with 1mM EDTA for 20 min and allow to cool before testing.



SDS-PAGE analysis of purified, BSA-free Cadherin 2 antibody (clone CDH2/9490) as confirmation of integrity and purity.

## Description

Recognizes a protein of ~140kDa, identified as N-Cadherin (NCAD), also known as CD325. NCAD is a member of the Cadherin superfamily, and consists of five extracellular repeats, a transmembrane domain and a cytoplasmic domain.

## Application Notes

Optimal dilution of the Cadherin 2 antibody should be determined by the researcher.

## Immunogen

A recombinant human Cadherin 2 partial protein from the cytoplasmic domain was used as the immunogen for the Cadherin 2 antibody.

## Storage

Aliquot the Cadherin 2 antibody and store frozen at -20oC or colder. Avoid repeated freeze-thaw cycles.