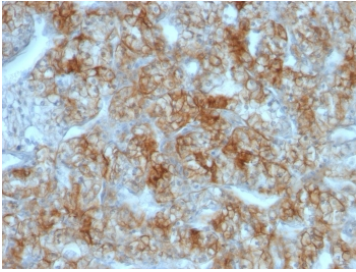


Cadherin 16 Antibody [clone CDH16/1071] (V2429)

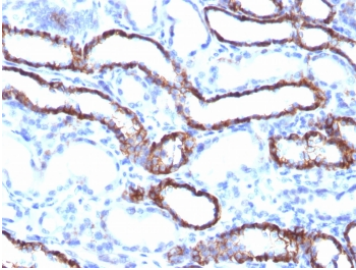
Catalog No.	Formulation	Size
V2429-100UG	0.2 mg/ml in 1X PBS with 0.1 mg/ml BSA (US sourced) and 0.05% sodium azide	100 ug
V2429-20UG	0.2 mg/ml in 1X PBS with 0.1 mg/ml BSA (US sourced) and 0.05% sodium azide	20 ug
V2429SAF-100UG	1 mg/ml in 1X PBS; BSA free, sodium azide free	100 ug
V2429IHC-7ML	Prediluted in 1X PBS with 0.1 mg/ml BSA (US sourced) and 0.05% sodium azide; *For IHC use only*	7 ml

[Bulk quote request](#)

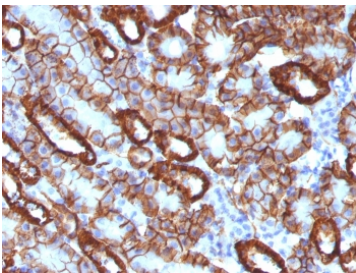
Availability	1-3 business days
Species Reactivity	Human, Mouse, Rat
Format	Purified
Clonality	Monoclonal (mouse origin)
Isotype	Mouse IgG1, kappa
Clone Name	CDH16/1071
Purity	Protein G affinity chromatography
UniProt	O75309
Localization	Cell surface with some cytoplasmic
Applications	ELISA : 2-4ug/ml (order BSA/azide-free format) Immunofluorescence : 1-2ug/ml Flow Cytometry : 1-2ug/10 ⁶ cells Western Blot : 1-2ug/ml Immunohistochemistry (FFPE) : 1-2ug/ml for 30 min at RT
Limitations	This Cadherin 16 antibody is available for research use only.



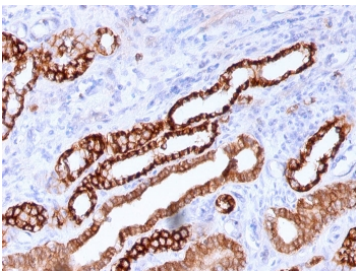
IHC testing of FFPE human renal cell carcinoma with Cadherin 16 antibody (clone CDH16/1071). Required HIER: boil tissue sections in 10mM Tris with 1mM EDTA, pH 9, for 10-20 min followed by cooling at RT for 20 min.



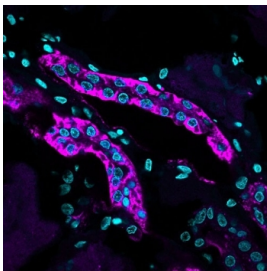
IHC testing of FFPE rat kidney with Cadherin 16 antibody (clone CDH16/1071). Required HIER: boil tissue sections in 10mM Tris with 1mM EDTA, pH 9, for 10-20 min followed by cooling at RT for 20 min.



IHC testing of FFPE mouse kidney with Cadherin 16 antibody (clone CDH16/1071). Required HIER: boil tissue sections in 10mM Tris with 1mM EDTA, pH 9, for 10-20 min followed by cooling at RT for 20 min.



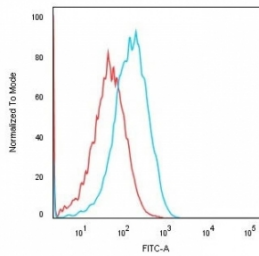
IHC testing of FFPE human kidney with Cadherin 16 antibody (clone CDH16/1071). Required HIER: boil tissue sections in 10mM Tris with 1mM EDTA, pH 9, for 10-20 min followed by cooling at RT for 20 min.



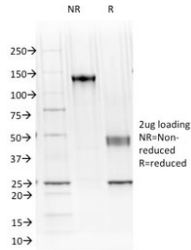
Immunofluorescent staining of human kidney tissue with Cadherin 16 antibody (purple, clone CDH16/1071).

kDa
250 —
150 —
100 —
75 —
50 —
37 —
25 —
20 —
15 —
10 —

Western blot testing of human kidney lysate with Cadherin 16 antibody (clone CDH16/1071). Expected molecular weight: 90~130 kDa.



Flow cytometry testing of human HEK293 cells with Cadherin 16 antibody (clone CDH16/1071); Red=isotype control, Blue= Cadherin 16 antibody.



SDS-PAGE analysis of purified, BSA-free Cadherin 16 antibody (clone CDH16/1071) as confirmation of integrity and purity.

Description

This mAb recognizes a protein of 130kDa, identified as Ksp-cadherin. Cadherins form a superfamily of related glycoproteins that mediate calcium-dependent cell adhesion and transmit signals from the extracellular matrix to the cytoplasm. Cadherins have been implicated in embryogenesis, tissue morphogenesis, tissue structure maintenance, cell polarization, neoplastic invasiveness and metastasis, and membrane transport. It is suggested that Ksp-cadherin is a marker for terminal differentiation of the basolateral membranes of renal tubular epithelial cells. Within the kidney, Ksp-Cadherin is found exclusively in the basolateral membrane of renal tubular epithelial cells and collecting duct cells, and not in glomeruli, renal interstitial cells, or blood vessels. Ksp-Cadherin has been suggested to distinguish Chromophobe Renal-Cell Carcinoma from Oncocytoma.

Application Notes

Optimal dilution of the Cadherin 16 antibody to be determined by the researcher.

1. The prediluted format is supplied in a dropper bottle and is optimized for use in IHC. After epitope retrieval step (if required), drip mAb solution onto the tissue section and incubate at RT for 30 min.

Immunogen

Recombinant human protein was used as the immunogen for the Cadherin 16 antibody.

Storage

Store the Cadherin 16 antibody at 2-8°C (with azide) or aliquot and store at -20°C or colder (without azide).

