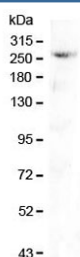


CAD Antibody / CAD Protein (RQ4026)

Catalog No.	Formulation	Size
RQ4026	0.5mg/ml if reconstituted with 0.2ml sterile DI water	100 ug

Bulk quote request

Availability	1-3 business days
Species Reactivity	Human, Mouse
Format	Antigen affinity purified
Clonality	Polyclonal (rabbit origin)
Isotype	Rabbit IgG
Purity	Antigen affinity purified
Buffer	Lyophilized from 1X PBS with 2% Trehalose and 0.025% sodium azide
UniProt	P27708
Applications	Western Blot : 0.5-1ug/ml Direct ELISA : 0.1-0.5ug/ml
Limitations	This CAD antibody is available for research use only.



Western blot testing of mouse pancreas lysate with CAD antibody at 0.5ug/ml. Predicted molecular weight ~243 kDa.

Description

The de novo synthesis of pyrimidine nucleotides is required for mammalian cells to proliferate. This CAD gene encodes a trifunctional protein which is associated with the enzymatic activities of the first 3 enzymes in the 6-step pathway of pyrimidine biosynthesis: carbamoylphosphate synthetase (CPS II), aspartate transcarbamoylase, and dihydroorotase. This protein is regulated by the mitogen-activated protein kinase (MAPK) cascade, which indicates a direct link between activation of the MAPK cascade and de novo biosynthesis of pyrimidine nucleotides. Alternative splicing results in multiple transcript variants encoding different isoforms.

Application Notes

Optimal dilution of the CAD antibody should be determined by the researcher.

Immunogen

A recombinant human partial protein corresponding to amino acids L1555-K1780 was used as the immunogen for the CAD antibody.

Storage

After reconstitution, the CAD antibody can be stored for up to one month at 4°C. For long-term, aliquot and store at -20°C. Avoid repeated freezing and thawing.