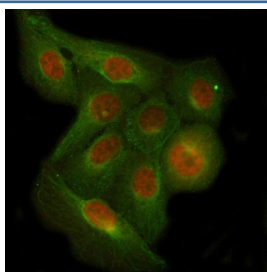


C7orf47 Antibody / PPP1R35 (RQ8253)

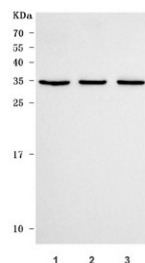
Catalog No.	Formulation	Size
RQ8253	0.5mg/ml if reconstituted with 0.2ml sterile DI water	100 ug

Bulk quote request

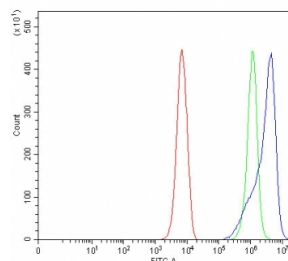
Availability	1-3 business days
Species Reactivity	Human
Format	Antigen affinity purified
Clonality	Polyclonal (rabbit origin)
Isotype	Rabbit IgG
Purity	Antigen affinity purified
Buffer	Lyophilized from 1X PBS with 2% Trehalose
UniProt	Q8TAP8
Localization	Cytoplasm, Nucleus
Applications	Western Blot : 0.5-1ug/ml Immunofluorescence : 5ug/ml Flow Cytometry : 1-3ug/million cells Direct ELISA : 0.1-0.5ug/ml
Limitations	This C7orf47 antibody is available for research use only.



Immunofluorescent staining of FFPE human U-2 OS cells with C7orf47 antibody (red) and Beta Tubulin mAb (green). HIER: steam section in pH6 citrate buffer for 20 min.



Western blot testing of human 1) Jurkat, 2) SY-SY5Y and 3) K562 cell lysate with C7orf47 antibody. Predicted molecular weight ~28 kDa.



Flow cytometry testing of fixed and permeabilized human K562 cells with C7orf47 antibody at 1ug/million cells (blocked with goat sera); Red=cells alone, Green=isotype control, Blue= C7orf47 antibody.

Description

PPP1R35 (Protein phosphatase 1 regulatory subunit 35), also called C7orf47, is a putative regulator of protein phosphatase-1. It is a centrosomal protein that regulates centriole elongation and centriole-to-centrosome conversion. Predicted to enable phosphatase binding activity and protein phosphatase inhibitor activity. Predicted to be involved in negative regulation of phosphatase activity.

Application Notes

Optimal dilution of the C7orf47 antibody should be determined by the researcher.

Immunogen

E. coli-derived recombinant human protein (amino acids E27-A253) was used as the immunogen for the C7orf47 antibody.

Storage

After reconstitution, the C7orf47 antibody can be stored for up to one month at 4oC. For long-term, aliquot and store at -20oC. Avoid repeated freezing and thawing.