

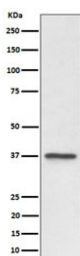
C3orf38 Antibody [clone 29C43] (RQ8679)

Catalog No.	Formulation	Size
RQ8679	Antibody in PBS with 0.02% sodium azide, 50% glycerol and 0.4-0.5mg/ml BSA	100 ul

Recombinant RABBIT MONOCLONAL

[Bulk quote request](#)

Availability	1-3 days
Species Reactivity	Human
Format	Purified
Clonality	Recombinant Rabbit Monoclonal
Isotype	Rabbit IgG
Clone Name	29C43
Purity	Affinity chromatography
UniProt	Q5JPI3
Localization	Nuclear
Applications	Western Blot : 1:500-1:2000
Limitations	This C3orf38 antibody is available for research use only.



Western blot testing of human U-87 MG cell lysate with C3orf38 antibody. Predicted molecular weight ~37 kDa.

Description

C3orf38 may be involved in apoptosis regulation. [UniProt]

Application Notes

Optimal dilution of the C3orf38 antibody should be determined by the researcher.

Immunogen

A synthetic peptide specific to human C3orf38 protein was used as the immunogen for the C3orf38 Antibody.

Storage

Store the C3orf38 antibody at -20oC.