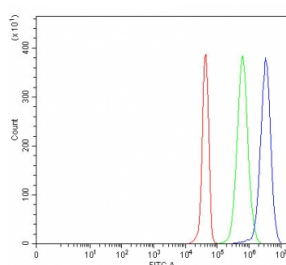


## C12orf53 Antibody / PIANP / PILR alpha-associated neural protein (RQ8056)

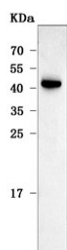
Catalog No.	Formulation	Size
RQ8056	0.5mg/ml if reconstituted with 0.2ml sterile DI water	100 ug

**Bulk quote request**

<b>Availability</b>	1-3 business days
<b>Species Reactivity</b>	Human
<b>Format</b>	Antigen affinity purified
<b>Clonality</b>	Polyclonal (rabbit origin)
<b>Isotype</b>	Rabbit IgG
<b>Purity</b>	Antigen affinity purified
<b>Buffer</b>	Lyophilized from 1X PBS with 2% Trehalose
<b>UniProt</b>	Q8IYJ0
<b>Applications</b>	Western Blot : 0.5-1ug/ml Flow Cytometry : 1-3ug/million cells Direct ELISA : 0.1-0.5ug/ml
<b>Limitations</b>	This C12orf53 antibody is available for research use only.



Flow cytometry testing of fixed and permeabilized human JK cells with C12orf53 antibody at 1ug/million cells (blocked with goat sera); Red=cells alone, Green=isotype control, Blue= C12orf53 antibody.



Western blot testing of human SH-SY5Y cell lysate with C12orf53 antibody. Predicted molecular weight ~30 kDa but may be observed at higher molecular weights due to glycosylation.

## Description

This gene encodes a ligand for the paired immunoglobulin-like type 2 receptor alpha, and so may be involved in immune regulation. Alternate splicing results in multiple transcript variants encoding different proteins.

## Application Notes

Optimal dilution of the C12orf53 antibody should be determined by the researcher.

## Immunogen

E. coli-derived recombinant human protein (amino acids R56-L282) was used as the immunogen for the C12orf53 antibody.

## Storage

After reconstitution, the C12orf53 antibody can be stored for up to one month at 4°C. For long-term, aliquot and store at -20°C. Avoid repeated freezing and thawing.