

c-RET Antibody [clone 188CT11.2.3] (F53523)

Catalog No.	Formulation	Size
F53523-0.1ML	In ascites with 0.09% sodium azide	0.1 ml



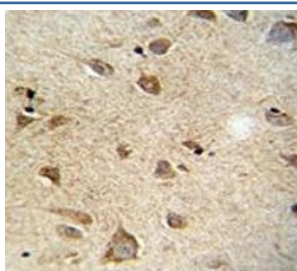
Citations (1)

[Bulk quote request](#)

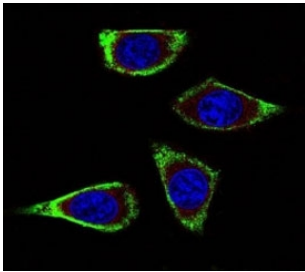
Availability	1-3 business days
Species Reactivity	Human
Format	Ascites
Clonality	Monoclonal (mouse origin)
Isotype	Mouse IgM, k
Clone Name	188CT11.2.3
Purity	Ascites
UniProt	P07949
Applications	Western Blot : 1:500-1:16000 IHC (Paraffin) : 1:50-1:100 Immunofluorescence : 1:10-1:50
Limitations	This c-RET antibody is available for research use only.

250
130
95
72
55

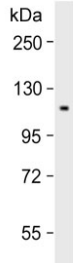
Western blot testing of human A549 cell lysate with c-RET antibody.



c-RET antibody immunohistochemistry analysis in formalin fixed and paraffin embedded human brain tissue.



Confocal immunofluorescent analysis of c-RET antibody with MDA-MB231 cells followed by Alexa Fluor 488-conjugated goat anti-mouse IgG (green). Actin filaments have been labeled with Alexa Fluor 555 Phalloidin (red). DAPI was used as a nuclear counterstain (blue).



Western blot testing of mouse heart lysate with c-RET antibody.

Description

This gene, a member of the cadherin superfamily, encodes one of the receptor tyrosine kinases, which are cell-surface molecules that transduce signals for cell growth and differentiation. This gene plays a crucial role in neural crest development, and it can undergo oncogenic activation *in vivo* and *in vitro* by cytogenetic rearrangement. Mutations in this gene are associated with the disorders multiple endocrine neoplasia, type IIA, multiple endocrine neoplasia, type IIB, Hirschsprung disease, and medullary thyroid carcinoma. Two transcript variants encoding different isoforms have been found for this gene. Additional transcript variants have been described but their biological validity has not been confirmed.

Application Notes

Titration of the c-RET antibody may be required due to differences in protocols and secondary/substrate sensitivity.

Immunogen

This c-RET antibody was raised using purified His-tagged recombinant human c-RET.

Storage

Aliquot the c-RET antibody and store frozen at -20°C or colder. Avoid repeated freeze-thaw cycles.