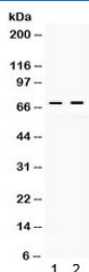


c-Rel Antibody (R31972)

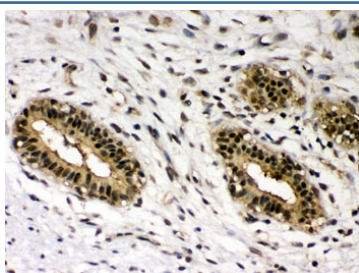
Catalog No.	Formulation	Size
R31972	0.5mg/ml if reconstituted with 0.2ml sterile DI water	100 ug

Bulk quote request

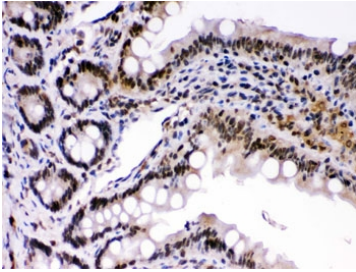
Availability	1-3 business days
Species Reactivity	Human, Mouse, Rat
Format	Antigen affinity purified
Clonality	Polyclonal (rabbit origin)
Isotype	Rabbit IgG
Purity	Antigen affinity
Buffer	Lyophilized from 1X PBS with 2.5% BSA and 0.025% sodium azide
UniProt	P15307
Localization	Cytoplasmic
Applications	Western Blot : 0.1-0.5ug/ml Immunohistochemistry (FFPE) : 0.5-1ug/ml
Limitations	This c-Rel antibody is available for research use only.



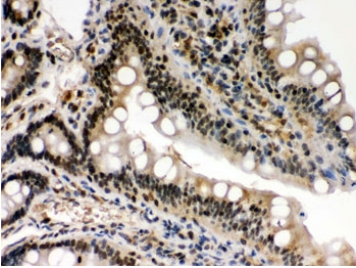
Western blot testing of 1) rat kidney and 2) human HeLa lysate with c-Rel antibody. Expected/observed molecular weight ~69 kDa.



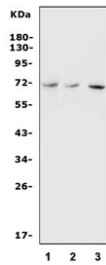
IHC testing of human breast cancer tissue with c-Rel antibody. HIER: Boil the paraffin sections in pH 6, 10mM citrate buffer for 20 minutes and allow to cool prior to staining.



IHC testing of mouse intestine with c-Rel antibody. HIER: Boil the paraffin sections in pH 6, 10mM citrate buffer for 20 minutes and allow to cool prior to staining.



IHC testing of rat intestine with c-Rel antibody. HIER: Boil the paraffin sections in pH 6, 10mM citrate buffer for 20 minutes and allow to cool prior to staining.



Western blot testing of 1) human ThP-1, 2) rat spleen and 3) mouse thymus lysate with c-Rel antibody. Expected/observed molecular weight ~69 kDa.

Description

The proto-oncogene c-Rel is a protein that in humans is encoded by the REL gene. This gene is mapped to chromosome 2p13-p12. The c-Rel protein is a member of the NF- κ B family of transcription factors and contains a Rel homology domain (RHD) at its N-terminus and two C-terminal transactivation domains. c-Rel has an important role in B-cell survival and proliferation. The REL gene is amplified or mutated in several human B-cell lymphomas, including diffuse large B-cell lymphoma and Hodgkin's lymphoma.

Application Notes

Optimal dilution of the c-Rel antibody should be determined by the researcher.

Immunogen

Amino acids DQEVSESMDFRYLPDEKDAYGNKSKKQKTTLIFQKLLQD of mouse c-Rel were used as the immunogen for the c-Rel antibody.

Storage

After reconstitution, the c-Rel antibody can be stored for up to one month at 4°C. For long-term, aliquot and store at -20°C. Avoid repeated freezing and thawing.

