

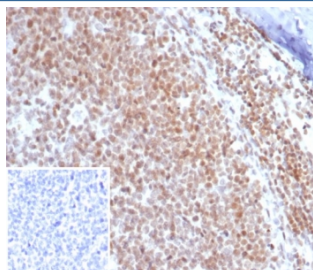
c-Myc Antibody / MYC [clone MYC/7854R] (V5268)

Catalog No.	Formulation	Size
V5268-100UG	0.2 mg/ml in 1X PBS with 0.1 mg/ml BSA (US sourced), 0.05% sodium azide	100 ug
V5268-20UG	0.2 mg/ml in 1X PBS with 0.1 mg/ml BSA (US sourced), 0.05% sodium azide	20 ug
V5268SAF-100UG	1 mg/ml in 1X PBS; BSA free, sodium azide free	100 ug

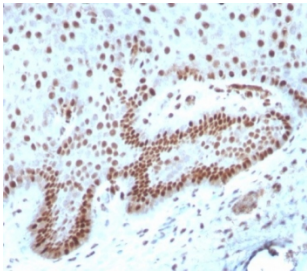
Recombinant **RABBIT MONOCLONAL**

[Bulk quote request](#)

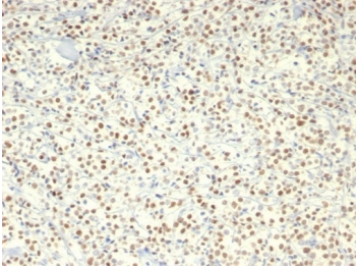
Availability	1-3 business days
Species Reactivity	Human
Format	Purified
Clonality	Recombinant Rabbit Monoclonal
Isotype	Rabbit IgG, kappa
Clone Name	MYC/7854R
Purity	Protein A/G affinity
UniProt	P01106
Localization	Nucleus
Applications	Western Blot : 1-2ug/ml Immunohistochemistry (FFPE) : 1-2ug/ml for 30 min at RT
Limitations	This c-Myc antibody is available for research use only.



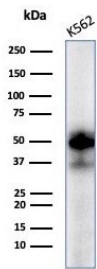
IHC staining of FFPE human tonsil tissue with c-Myc antibody (clone MYC/7854R). Inset: PBS used in place of primary Ab (secondary Ab negative control). HIER: boil tissue sections in pH 9 10mM Tris with 1mM EDTA for 20 min and allow to cool before testing.



IHC staining of FFPE human cervix tissue with c-Myc antibody (clone MYC/7854R).
HIER: boil tissue sections in pH 9 10mM Tris with 1mM EDTA for 20 min and allow to cool before testing.



IHC staining of FFPE human lymphoma with c-Myc antibody (clone MYC/7854R). HIER: boil tissue sections in pH 9 10mM Tris with 1mM EDTA for 20 min and allow to cool before testing.



Western blot testing of human K562 cell lysate with c-Myc antibody (clone MYC/7854R).
Theoretical molecular weight: ~50 kDa but routinely observed at 50~70 kDa.

Description

c-Myc is involved in the control of cell proliferation and differentiation and is amplified and/or overexpressed in a variety of tumors.

Application Notes

Optimal dilution of the c-Myc antibody should be determined by the researcher.

Immunogen

A recombinant partial protein sequence (within amino acids 1-200) from the human protein was used as the immunogen for the c-Myc antibody.

Storage

Aliquot the c-Myc antibody and store frozen at -20oC or colder. Avoid repeated freeze-thaw cycles.