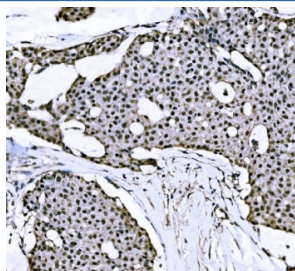


## BTBD14B Antibody / NACC1 / NAC1 (RQ6781)

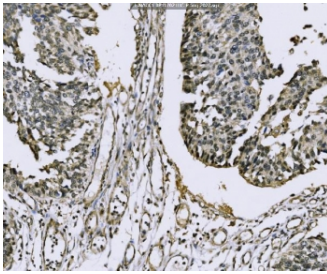
Catalog No.	Formulation	Size
RQ6781	0.5mg/ml if reconstituted with 0.2ml sterile DI water	100 ug

**Bulk quote request**

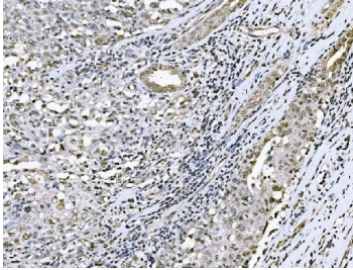
<b>Availability</b>	1-3 business days
<b>Species Reactivity</b>	Human
<b>Format</b>	Antigen affinity purified
<b>Clonality</b>	Polyclonal (rabbit origin)
<b>Isotype</b>	Rabbit IgG
<b>Purity</b>	Antigen affinity purified
<b>Buffer</b>	Lyophilized from 1X PBS with 2% Trehalose
<b>UniProt</b>	Q96RE7
<b>Localization</b>	Cytoplasmic, nuclear
<b>Applications</b>	Western Blot : 1-2ug/ml Immunohistochemistry (FFPE) : 2-5ug/ml Immunofluorescence (FFPE) : 5ug/ml Flow Cytometry : 1-3ug/million cells Direct ELISA : 0.1-0.5ug/ml
<b>Limitations</b>	This BTBD14B antibody is available for research use only.



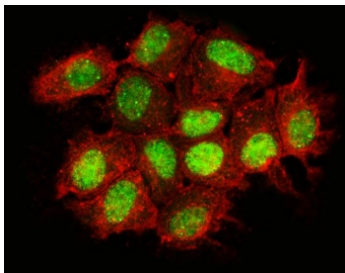
IHC staining of FFPE human papillary carcinoma of the breast with BTBD14B antibody.  
HIER: boil tissue sections in pH8 EDTA for 20 min and allow to cool before testing.



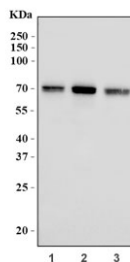
IHC staining of FFPE human bladder epithelial carcinoma with BTBD14B antibody.  
HIER: boil tissue sections in pH8 EDTA for 20 min and allow to cool before testing.



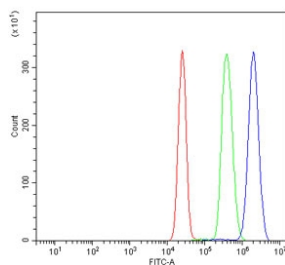
IHC staining of FFPE human renal pelvis squamous metaplasia with BTBD14B antibody.  
HIER: boil tissue sections in pH8 EDTA for 20 min and allow to cool before testing.



Immunofluorescent staining of FFPE human MCF7 cells with BTBD14B antibody (green) and phalloidin (red). HIER: steam section in pH6 citrate buffer for 20 min.



Western blot testing of human 1) HeLa, 2) MCF7 and 3) Caco-2 cell lysate with BTBD14B antibody. Predicted molecular weight: ~57 kDa, commonly observed at 57-70 kDa.



Flow cytometry testing of human K562 cells with BTBD14B antibody at 1ug/million cells (blocked with goat sera); Red=cells alone, Green=isotype control, Blue= BTBD14B antibody.

## Description

Nucleus accumbens-associated protein 1 is a protein that in humans is encoded by the NACC1 gene. This gene encodes a member of the BTB/POZ protein family. BTB/POZ proteins are involved in several cellular processes including proliferation, apoptosis and transcription regulation. The encoded protein is a transcriptional repressor that plays a role in stem cell self-renewal and pluripotency maintenance. The encoded protein also suppresses transcription of the candidate tumor suppressor Gadd45/GIP1, and expression of this gene may play a role in the progression of multiple types of cancer. A pseudogene of this gene is located on the short arm of chromosome 9.

## Application Notes

Optimal dilution of the BTBD14B antibody should be determined by the researcher.

## **Immunogen**

Recombinant human protein (amino acids E114-E317) was used as the immunogen for the BTBD14B antibody.

## **Storage**

After reconstitution, the BTBD14B antibody can be stored for up to one month at 4°C. For long-term, aliquot and store at -20°C. Avoid repeated freezing and thawing.