

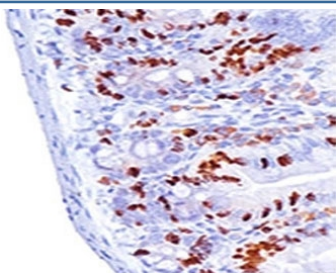
## Bromodeoxyuridine Antibody [clone MoBu-1] (V3108)

Catalog No.	Formulation	Size
V3108-100UG	0.2 mg/ml in 1X PBS with 0.1 mg/ml BSA (US sourced) and 0.05% sodium azide	100 ug
V3108-20UG	0.2 mg/ml in 1X PBS with 0.1 mg/ml BSA (US sourced) and 0.05% sodium azide	20 ug
V3108SAF-100UG	1 mg/ml in 1X PBS; BSA free, sodium azide free	100 ug
V3108IHC-7ML	Prediluted in 1X PBS with 0.1 mg/ml BSA (US sourced) and 0.05% sodium azide; *For IHC use only*	7 ml

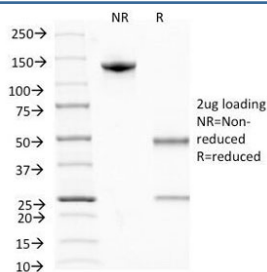
 [Citations \(13\)](#)

[Bulk quote request](#)

<b>Availability</b>	1-3 business days
<b>Species Reactivity</b>	All species
<b>Format</b>	Purified
<b>Clonality</b>	Monoclonal (mouse origin)
<b>Isotype</b>	Mouse IgG1, kappa
<b>Clone Name</b>	MoBu-1
<b>Purity</b>	Protein G affinity chromatography
<b>UniProt</b>	Not Applicable
<b>Localization</b>	Nuclear
<b>Applications</b>	Flow Cytometry : 0.5-1ug/10 <sup>6</sup> cells Immunofluorescence : 0.5-1ug/ml Immunohistochemistry (FFPE) : 0.5-1ug/ml for 30 min at RT
<b>Limitations</b>	This Bromodeoxyuridine antibody is available for research use only.



IHC: Formalin-fixed, paraffin-embedded mouse small intestine stained with Bromodeoxyuridine antibody (MoBu-1).



SDS-PAGE Analysis of Purified, BSA-Free Bromodeoxyuridine Antibody (clone MoBu-1). Confirmation of Integrity and Purity of the Antibody.

## Description

It reacts with Bromodeoxyuridine (BrdU) in single stranded DNA (produced by partial denaturation of double stranded DNA), BrdU coupled to a protein carrier, as well as free BrdU. BrdU is a thymidine analog, incorporated into cell nuclei during DNA synthesis prior to mitosis. Antibody to BrdU is helpful in detecting S-phase cells, providing useful information on the aggressiveness of tumors.

## Application Notes

Optimal dilution of the Bromodeoxyuridine antibody should be determined by the researcher.

1. For staining of formalin-fixed tissues, incubate sections in 4N HCl for 30 min at RT followed by digestion with Trypsin at 1mg/ml PBS, 10 min at 37°C.
2. The prediluted format is supplied in a dropper bottle and is optimized for use in IHC. After epitope retrieval step (if required), drip mAb solution onto the tissue section and incubate at RT for 30 min.

## Immunogen

BrdU conjugated to hemocyanine was used as the immunogen for the Bromodeoxyuridine antibody.

## Storage

Store the Bromodeoxyuridine antibody at 2-8°C (with azide) or aliquot and store at -20°C or colder (without azide).