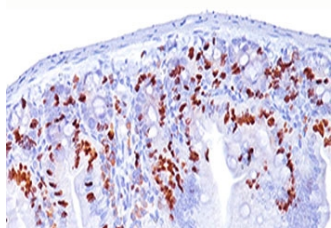


## BrdU Antibody [clone BRD494] (V2322)

Catalog No.	Formulation	Size
V2322-100UG	0.2 mg/ml in 1X PBS with 0.1 mg/ml BSA (US sourced) and 0.05% sodium azide	100 ug
V2322-20UG	0.2 mg/ml in 1X PBS with 0.1 mg/ml BSA (US sourced) and 0.05% sodium azide	20 ug
V2322SAF-100UG	1 mg/ml in 1X PBS; BSA free, sodium azide free	100 ug
V2322IHC-7ML	Prediluted in 1X PBS with 0.1 mg/ml BSA (US sourced) and 0.05% sodium azide; *For IHC use only*	7 ml

[Bulk quote request](#)

<b>Species Reactivity</b>	All species
<b>Format</b>	Purified
<b>Clonality</b>	Monoclonal (mouse origin)
<b>Isotype</b>	Mouse IgG1
<b>Clone Name</b>	BRD494
<b>Purity</b>	Protein G affinity chromatography
<b>Buffer</b>	1X PBS, pH 7.4
<b>Gene ID</b>	Not Applicable
<b>Localization</b>	Nuclear
<b>Applications</b>	Immunohistochemistry (FFPE) : 0.5-1ug/ml for 30 min at RT
<b>Limitations</b>	This <b>BrdU / Bromodeoxyuridine antibody</b> is available for research use only.



IHC staining of mouse intestine tissue (10X) with BrdU antibody (BRD494).

## Description

This antibody reacts with Bromodeoxyuridine (BrdU) in single stranded DNA (produced by partial denaturation of double stranded DNA), BrdU coupled to a protein carrier, as well as free BrdU. BrdU is a thymidine analog, incorporated into cell nuclei during DNA synthesis prior to mitosis. Antibody to Bromodeoxyuridine / BrdU is helpful in detecting S-phase cells, providing useful information on the aggressiveness of tumors.

## Application Notes

The concentration stated for each application is a general starting point. Variations in protocols, secondaries and substrates may require the Bromodeoxyuridine / BrdU antibody to be titrated up or down for optimal performance.

1. For staining of formalin-fixed tissues, incubate sections in 4N HCl for 30 minutes at RT followed by digestion with trypsin at 1mg/ml PBS, 10 min at 37oC.
2. The prediluted format is supplied in a dropper bottle and is optimized for use in IHC. After epitope retrieval step (if required), drip mAb solution onto the tissue section and incubate at RT for 30 min.

## Immunogen

BrdU / Bromodeoxyuridine conjugated to KLH was used as the immunogen for this antibody.

## Storage

Store the BrdU antibody at 2-8oC (with azide) or aliquot and store at -20oC or colder (without azide).

## Alternate Names

Bromodeoxyuridine, BUdr, BrdU antibody

## References (2)