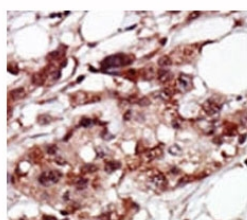


## BRD4 Antibody (C-Terminal Region) (F53771)

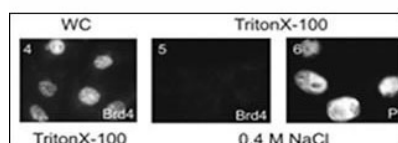
Catalog No.	Formulation	Size
F53771-0.4ML	In 1X PBS, pH 7.4, with 0.09% sodium azide	0.4 ml
F53771-0.08ML	In 1X PBS, pH 7.4, with 0.09% sodium azide	0.08 ml

**Bulk quote request**

<b>Availability</b>	1-3 business days
<b>Species Reactivity</b>	Human
<b>Predicted Reactivity</b>	Mouse
<b>Format</b>	Purified
<b>Clonality</b>	Polyclonal (rabbit origin)
<b>Isotype</b>	Rabbit Ig
<b>Purity</b>	Purified
<b>UniProt</b>	O60885
<b>Applications</b>	IHC (Paraffin) : 1:50-1:100
<b>Limitations</b>	This BRD4 antibody is available for research use only.



IHC analysis of FFPE human breast carcinoma tissue stained with the BRD4 antibody



Subnuclear distribution of cellular proteins. CHOBl40 cells grown on coverslips were either directly or after treatment with 0.5% Triton X-100, incubated with BRD4 antibody (left, center). Propidium iodide staining of cellular DNA (right).

## Description

BRD4 is homologous to the murine protein MCAP, which associates with chromosomes during mitosis, and to the human RING3 protein, a serine/threonine kinase. Each of these proteins contains two bromodomains, a conserved sequence motif which may be involved in chromatin targeting. The gene has been implicated as the chromosome 19 target of translocation t(15;19)(q13;p13.1), which defines an upper respiratory tract carcinoma in young people.

## Application Notes

Titration of the BRD4 antibody may be required due to differences in protocols and secondary/substrate sensitivity.

## Immunogen

A portion of amino acids 1313-1342 from the human protein was used as the immunogen for this BRD4 antibody.

## Storage

Aliquot the BRD4 antibody and store frozen at -20oC or colder. Avoid repeated freeze-thaw cycles.