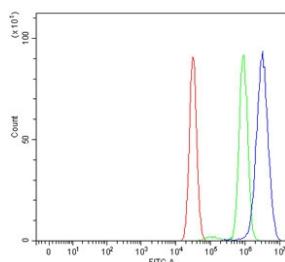


BRCA1-Associated Protein 1 / BAP1 (RQ6826)

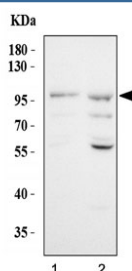
Catalog No.	Formulation	Size
RQ6826	0.5mg/ml if reconstituted with 0.2ml sterile DI water	100 ug

Bulk quote request

Availability	1-3 business days
Species Reactivity	Human
Format	Antigen affinity purified
Clonality	Polyclonal (rabbit origin)
Isotype	Rabbit IgG
Purity	Antigen affinity purified
Buffer	Lyophilized from 1X PBS with 2% Trehalose
UniProt	Q92560
Applications	Western Blot : 1-2ug/ml Flow Cytometry : 1-3ug/million cells Direct ELISA : 0.1-0.5ug/ml
Limitations	This BRCA1-Associated Protein 1 antibody is available for research use only.



Flow cytometry testing of human MCF7 cells with BRCA1-Associated Protein 1 antibody at 1ug/million cells (blocked with goat sera); Red=cells alone, Green=isotype control, Blue= BRCA1-Associated Protein 1 antibody.



Western blot testing of human 1) PC-3 and 2) HepG2 cell lysate with BRCA1-Associated Protein 1 antibody. Expected molecular weight: 80-100 kDa.

Description

BAP1, also known as BRCA1-associated protein-1, contains an acidic region, a highly charged C-terminal region, and 2 putative nuclear localization signals. BAP1 is a novel ubiquitin hydrolase which binds to the BRCA1 RING finger and enhances BRCA1-mediated cell growth suppression. BAP1 is expressed as a 4-kb mRNA in all human tissues, and mapped to 3p21.3.

Application Notes

Optimal dilution of the BRCA1-Associated Protein 1 antibody should be determined by the researcher.

Immunogen

Recombinant human protein (amino acids E7-Q702) was used as the immunogen for the BRCA1-Associated Protein 1 antibody.

Storage

After reconstitution, the BRCA1-Associated Protein 1 antibody can be stored for up to one month at 4oC. For long-term, aliquot and store at -20oC. Avoid repeated freezing and thawing.