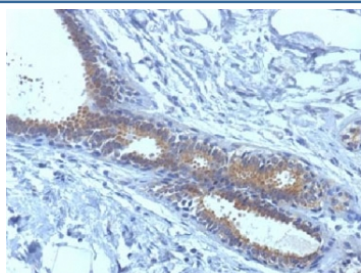


## BRCA1 Antibody [clone BRCA1/1398] (V3240)

Catalog No.	Formulation	Size
V3240-100UG	0.2 mg/ml in 1X PBS with 0.1 mg/ml BSA (US sourced) and 0.05% sodium azide	100 ug
V3240-20UG	0.2 mg/ml in 1X PBS with 0.1 mg/ml BSA (US sourced) and 0.05% sodium azide	20 ug
V3240SAF-100UG	1 mg/ml in 1X PBS; BSA free, sodium azide free	100 ug

**Bulk quote request**

<b>Availability</b>	1-3 business days
<b>Species Reactivity</b>	Human
<b>Format</b>	Purified
<b>Clonality</b>	Monoclonal (mouse origin)
<b>Isotype</b>	Mouse IgG1, kappa
<b>Clone Name</b>	BRCA1/1398
<b>Purity</b>	Protein G affinity chromatography
<b>UniProt</b>	P38398
<b>Localization</b>	Nuclear, cytoplasmic
<b>Applications</b>	Immunohistochemistry (FFPE) : 2-5ug/ml for 60 min at RT
<b>Limitations</b>	This BRCA1 antibody is available for research use only.



IHC testing of FFPE human breast carcinoma tissue with BRCA1 antibody (clone BRCA1/1398). HIER: boil tissue sections in 10mM citrate buffer, pH 6.0, for 10-20 min.

## Description

BRCA1 (Breast cancer type 1 susceptibility protein) is a nuclear phosphoprotein that plays a role in maintaining genomic stability, and it also acts as a tumor suppressor. The encoded protein combines with other tumor suppressors, DNA

damage sensors, and signal transducers to form a large multi-subunit protein complex known as the BRCA1-associated genome surveillance complex (BASC). This gene product associates with RNA polymerase II, and through the C-terminal domain, also interacts with histone deacetylase complexes. This protein thus plays a role in transcription, DNA repair of double-stranded breaks, and recombination. Mutations in this gene are responsible for approximately 40% of inherited breast cancers and more than 80% of inherited breast and ovarian cancers. Alternative splicing plays a role in modulating the subcellular localization and physiological function of this gene.

## Application Notes

Optimal dilution of the BRCA1 antibody should be determined by the researcher.

## Immunogen

Amino acids 445-620 were used as the immunogen for the BRCA1 antibody.

## Storage

Store the BRCA1 antibody at 2-8oC (with azide) or aliquot and store at -20oC or colder (without azide).