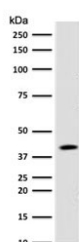


## BMI1 Antibody [clone PGRF4-1] (V7401)

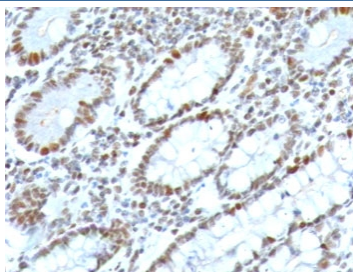
Catalog No.	Formulation	Size
V7401-100UG	0.2 mg/ml in 1X PBS with 0.1 mg/ml BSA (US sourced) and 0.05% sodium azide	100 ug
V7401-20UG	0.2 mg/ml in 1X PBS with 0.1 mg/ml BSA (US sourced) and 0.05% sodium azide	20 ug
V7401SAF-100UG	1 mg/ml in 1X PBS; BSA free, sodium azide free	100 ug
V7401IHC-7ML	Prediluted in 1X PBS with 0.1 mg/ml BSA (US sourced) and 0.05% sodium azide; *For IHC use only*	7 ml

[Bulk quote request](#)

<b>Availability</b>	1-3 business days
<b>Species Reactivity</b>	Human
<b>Format</b>	Purified
<b>Clonality</b>	Monoclonal (mouse origin)
<b>Isotype</b>	Mouse IgG1, kappa
<b>Clone Name</b>	PGRF4-1
<b>Purity</b>	Protein G affinity chromatography
<b>UniProt</b>	P35226
<b>Localization</b>	Nuclear
<b>Applications</b>	Immunohistochemistry (FFPE) : 1-2ug/ml Prediluted IHC Only Format : incubate for 30 min at RT (1)
<b>Limitations</b>	This BMI1 antibody is available for research use only.



Western blot testing of human 293T lysate with BMI1 antibody (clone PGRF4-1).  
Expected molecular weight: 37-43 kDa.



IHC testing of FFPE human colon carcinoma with BMI1 antibody (clone PGRF4-1).  
HIER: boil tissue sections in pH 9 10mM Tris with 1mM EDTA for 10-20 min followed by cooling at RT for 20 min.

## Description

The B cell-specific moloney murine leukemia virus integration site 1 (Bmi-1) is a transcriptional receptor of the polycomb gene family involved in several cellular processes including cell-cycle regulation, apoptosis, and maintenance of adult and neoplastic stem cells by providing self-renewal capacity. Further, Bmi-1 expression has been associated with malignant transformation, tumor progression, metastatic disease, and poor prognosis in human malignancies.

## Application Notes

Optimal dilution of the BMI1 antibody should be determined by the researcher.

1. The prediluted format is supplied in a dropper bottle and is optimized for use in IHC. After epitope retrieval step (if required), drip mAb solution onto the tissue section and incubate at RT for 30 min.

## Immunogen

A portion of amino acids 142-326 from the human protein was used as the immunogen for the BMI1 antibody.

## Storage

Store the BMI1 antibody at 2-8°C (with azide) or aliquot and store at -20°C or colder (without azide).