

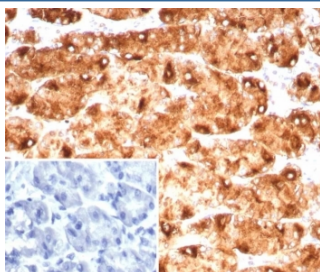
## Blood Group Lewis y Antibody [clone LWY/9243R] (V5378)

Catalog No.	Formulation	Size
V5378-100UG	0.2 mg/ml in 1X PBS with 0.1 mg/ml BSA (US sourced), 0.05% sodium azide	100 ug
V5378-20UG	0.2 mg/ml in 1X PBS with 0.1 mg/ml BSA (US sourced), 0.05% sodium azide	20 ug
V5378SAF-100UG	1 mg/ml in 1X PBS; BSA free, sodium azide free	100 ug

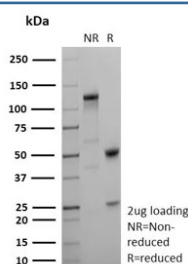
Recombinant **RABBIT MONOCLONAL**

[Bulk quote request](#)

<b>Availability</b>	1-3 business days
<b>Species Reactivity</b>	Human
<b>Format</b>	Purified
<b>Clonality</b>	Recombinant Rabbit Monoclonal
<b>Isotype</b>	Rabbit IgG, kappa
<b>Clone Name</b>	LWY/9243R
<b>Purity</b>	Protein A/G affinity
<b>Localization</b>	Cell membrane, Cytoplasm, Extracellular
<b>Applications</b>	Immunohistochemistry (FFPE) : 1-2ug/ml
<b>Limitations</b>	This Blood Group Lewis y antibody is available for research use only.



IHC staining of FFPE human stomach tissue with Blood Group Lewis y antibody (clone LWY/9243R). Inset: PBS used in place of primary Ab (secondary Ab negative control).



SDS-PAGE analysis of purified, BSA-free Blood Group Lewis y antibody (clone LWY/9243R) as confirmation of integrity and purity.

## Description

This antibody recognizes a carbohydrate epitope present on tumor-associated Lewis Y antigen (Fucalpha1-2Galbeta1-4/3[Fucalpha1-3/4]GlcNAcbeta-). Lewis Y is expressed in large bowel tumors and colorectal carcinomas. It may be useful in the classification of human renal and bladder tumors. The Lewis Y antigen has been evaluated as a clinical marker for the diagnosis and prognosis of cholangiocarcinoma, hepatocellular carcinoma and breast cancer.

## Application Notes

Optimal dilution of the Blood Group Lewis y antibody should be determined by the researcher.

## Immunogen

H3396 cultured line established from a metastasis of a human breast adenocarcinoma was used as the immunogen for the Blood Group Lewis y antibody.

## Storage

Aliquot the Blood Group Lewis y antibody and store frozen at -20oC or colder. Avoid repeated freeze-thaw cycles.