

Blood Group Lewis a Antibody [clone 7LE] (V3058)

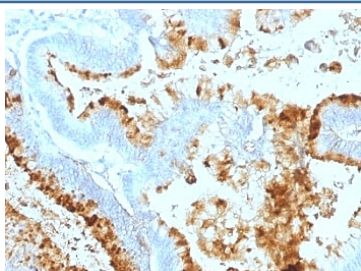
Catalog No.	Formulation	Size
V3058-100UG	0.2 mg/ml in 1X PBS with 0.1 mg/ml BSA (US sourced) and 0.05% sodium azide	100 ug
V3058-20UG	0.2 mg/ml in 1X PBS with 0.1 mg/ml BSA (US sourced) and 0.05% sodium azide	20 ug
V3058SAF-100UG	1 mg/ml in 1X PBS; BSA free, sodium azide free	100 ug
V3058IHC-7ML	Prediluted in 1X PBS with 0.1 mg/ml BSA (US sourced) and 0.05% sodium azide; *For IHC use only*	7 ml



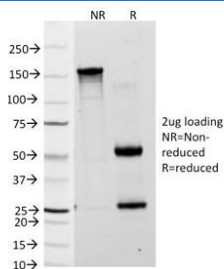
Citations (10)

[Bulk quote request](#)

Availability	1-3 business days
Species Reactivity	Human, Mouse
Format	Purified
Clonality	Monoclonal (mouse origin)
Isotype	Mouse IgG1, kappa
Clone Name	7LE
Purity	Protein G affinity chromatography
UniProt	Not Applicable
Localization	Cell membrane, cytoplasmic and extracellular
Applications	Flow Cytometry : 0.5-1ug/10 ⁶ cells Immunofluorescence : 0.5-1ug/ml Immunohistochemistry (FFPE) : 0.5-1ug/ml for 30 min at RT
Limitations	This Blood Group Lewis a antibody is available for research use only.



IHC: Formalin-fixed, paraffin-embedded human colon carcinoma stained with Blood Group Lewis a antibody (clone 7LE).



SDS-PAGE Analysis of Purified, BSA-Free Blood Group Lewis a Antibody (clone 7LE). Confirmation of Integrity and Purity of the Antibody.

Description

Recognizes a carbohydrate determinant of Gal 1-3 (Fuc 1-4) GlcNAc which is blood group antigen Lewis A. It is present primarily on epithelial cells such as colon and kidneys. In the tumors and dedifferentiated tissues, decrease of Lewis A antigen was observed. Lewis A (type 1 chain) is expressed in colonic epithelial cells and may be useful for detection of gastrointestinal tumors, pancreatic cancer, and colorectal tumors. Blood group related antigens represent a group of carbohydrate determinants carried on both glycolipids and glycoproteins. They are usually mucin-type, and are detected on erythrocytes, certain epithelial cells, and in secretions of certain individuals. Sixteen genetically and biosynthetically distinct but inter-related specificities belong to this group of antigens, including A, B, H, Lewis A, Lewis B, Lewis X, Lewis Y, and precursor type 1 chain antigens.

Application Notes

Optimal dilution of the Blood Group Lewis a antibody should be determined by the researcher.

1. Staining of formalin-fixed tissues requires boiling tissue sections in 10mM Citrate buffer, pH 6.0, for 10-20 min followed by cooling at RT for 20 min.
2. The prediluted format is supplied in a dropper bottle and is optimized for use in IHC. After epitope retrieval step (if required), drip mAb solution onto the tissue section and incubate at RT for 30 min.

Immunogen

Mucins isolated from ovarian cyst fluid were used as the immunogen for the Blood Group Lewis a antibody.

Storage

Store the Blood Group Lewis a antibody at 2-8°C (with azide) or aliquot and store at -20°C or colder (without azide).