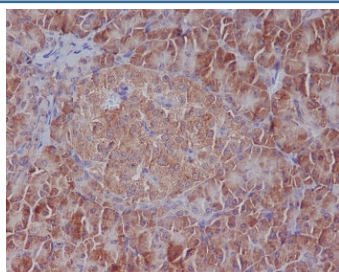


BiP Antibody / GRP78 / HSPA5 [clone BOO-8] (RQ5350)

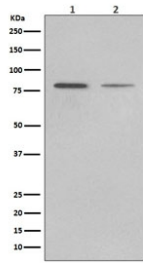
Catalog No.	Formulation	Size
RQ5350	Antibody in PBS with 0.02% sodium azide, 50% glycerol and 0.4-0.5mg/ml BSA	100 ul

[Bulk quote request](#)

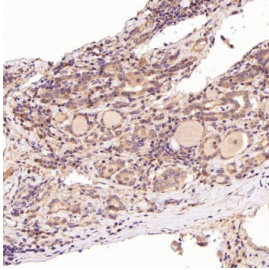
Availability	1-2 weeks
Species Reactivity	Human, Mouse, Rat
Format	Purified
Clonality	Rabbit Monoclonal
Isotype	Rabbit IgG
Clone Name	BOO-8
Purity	Affinity purified
UniProt	P11021
Localization	Cytoplasmic
Applications	Western Blot : 1:500-1:2000 Immunohistochemistry (FFPE) : 1:50-1:200 Immunofluorescence : 1:50-1:100
Limitations	This BiP antibody is available for research use only.



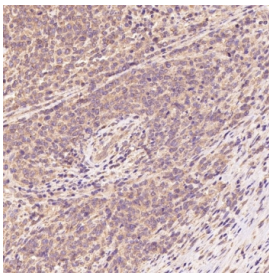
IHC staining of FFPE human pancreas tissue with BiP antibody. HIER: boil tissue sections in pH6, 10mM citrate buffer, for 10-20 min followed by cooling at RT for 20 min.



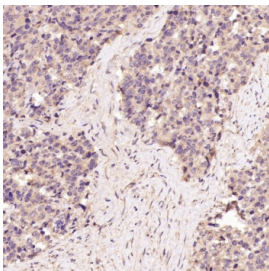
Western blot testing of human 1) LNCaP and 2) HepG2 cell lysate with BiP antibody. Predicted molecular weight: ~73 kDa, but routinely observed at 70-78 kDa.



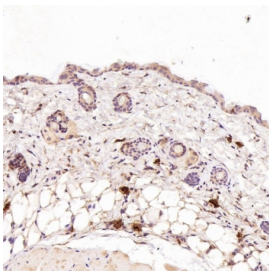
IHC staining of FFPE human thyroid cancer tissue with BiP antibody. HIER: boil tissue sections in pH6, 10mM citrate buffer, for 10-20 min followed by cooling at RT for 20 min.



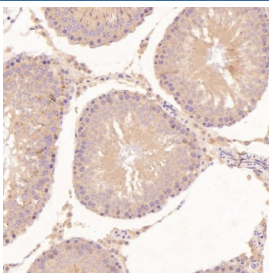
IHC staining of FFPE non-Hodgkin's Lymphoma tissue with BiP antibody. HIER: boil tissue sections in pH6, 10mM citrate buffer, for 10-20 min followed by cooling at RT for 20 min.



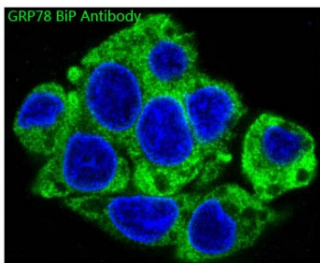
IHC staining of FFPE human prostate cancer tissue with BiP antibody. HIER: boil tissue sections in pH6, 10mM citrate buffer, for 10-20 min followed by cooling at RT for 20 min.



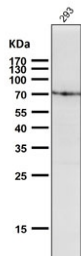
IHC staining of FFPE mouse skin tissue with BiP antibody. HIER: boil tissue sections in pH6, 10mM citrate buffer, for 10-20 min followed by cooling at RT for 20 min.



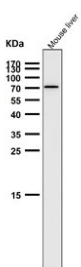
IHC staining of FFPE rat testis tissue with BiP antibody. HIER: boil tissue sections in pH6, 10mM citrate buffer, for 10-20 min followed by cooling at RT for 20 min.



Immunofluorescent staining of FFPE human HepG2 cells with BiP antibody (green) and DAPI nuclear stain (blue). HIER: steam section in pH6 citrate buffer for 20 min.



Western blot testing of human HEK293 cell lysate with BiP antibody. Predicted molecular weight: ~73 kDa, but routinely observed at 70-78 kDa.



Western blot testing of mouse liver tissue lysate with BiP antibody. Predicted molecular weight: ~73 kDa, but routinely observed at 70-78 kDa.

Description

The protein encoded by the HSPA5 gene is a member of the heat shock protein 70 (HSP70) family. It is localized in the lumen of the endoplasmic reticulum (ER), and is involved in the folding and assembly of proteins in the ER. As this protein interacts with many ER proteins, it may play a key role in monitoring protein transport through the cell. [RefSeq]

Application Notes

Optimal dilution of the BiP antibody should be determined by the researcher.

Immunogen

A synthetic peptide specific to human HSPA5 / BiP was used as the immunogen for the BiP antibody.

Storage

Store the BiP antibody at -20oC.