

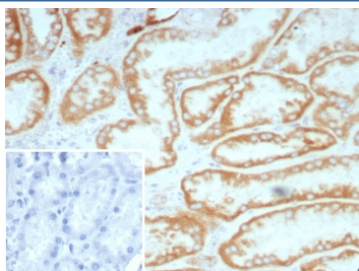
## Biotin Antibody [clone BTN/8672R] (V4071)

Catalog No.	Formulation	Size
V4071-100UG	0.2 mg/ml in 1X PBS with 0.1 mg/ml BSA (US sourced), 0.05% sodium azide	100 ug
V4071-20UG	0.2 mg/ml in 1X PBS with 0.1 mg/ml BSA (US sourced), 0.05% sodium azide	20 ug
V4071SAF-100UG	1 mg/ml in 1X PBS; BSA free, sodium azide free	100 ug

Recombinant **RABBIT MONOCLONAL**

[Bulk quote request](#)

<b>Availability</b>	1-3 business days
<b>Species Reactivity</b>	All species
<b>Format</b>	Purified
<b>Clonality</b>	Recombinant Rabbit Monoclonal
<b>Isotype</b>	Rabbit IgG, kappa
<b>Clone Name</b>	BTN/8672R
<b>Purity</b>	Protein A affinity
<b>UniProt</b>	Not Applicable
<b>Applications</b>	Flow Cytometry : 1-2ug/million cells Immunofluorescence : 1-2ug/ml Western Blot : 1-2ug/ml Immunohistochemistry (FFPE) : 1-2ug/ml for 30 minutes at RT
<b>Limitations</b>	This Biotin antibody is available for research use only.



IHC staining of FFPE human kidney tissue with Biotin antibody (clone BTN/8672R).  
HIER: boil tissue sections in pH 9 10mM Tris with 1mM EDTA for 20 min and allow to cool before testing.

## Description

This mAb recognizes both the free and protein-conjugated (either soluble or cell bound) form of biotin. It is highly specific to biotin and shows no cross-reaction with other structurally related compounds. It has a very high affinity for biotin and is excellent for use in various amplification techniques. In some applications, localization of biotinylated probes with avidin

produces unacceptably high background staining. Anti-biotin antibody may be substituted to decrease this noise.

## **Application Notes**

Optimal dilution of the Biotin antibody should be determined by the researcher.

## **Immunogen**

Biotinylated sheep immunoglobulin was used as the immunogen for the Biotin antibody.

## **Storage**

Aliquot the Biotin antibody and store frozen at -20oC or colder. Avoid repeated freeze-thaw cycles.