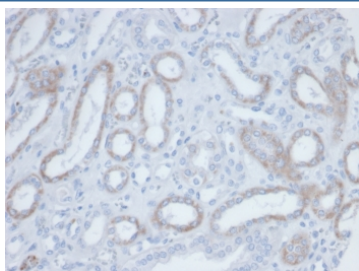


Biotin Antibody [clone BTN/36] (V9352)

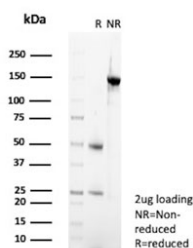
Catalog No.	Formulation	Size
V9352-100UG	0.2 mg/ml in 1X PBS with 0.1 mg/ml BSA (US sourced), 0.05% sodium azide	100 ug
V9352-20UG	0.2 mg/ml in 1X PBS with 0.1 mg/ml BSA (US sourced), 0.05% sodium azide	20 ug
V9352SAF-100UG	1 mg/ml in 1X PBS; BSA free, sodium azide free	100 ug

Bulk quote request

Availability	1-3 business days
Species Reactivity	All species
Format	Purified
Clonality	Monoclonal (mouse origin)
Isotype	Mouse IgG1, kappa
Clone Name	BTN/36
Purity	Protein A/G affinity
UniProt	Not Applicable
Applications	Flow Cytometry : 0.5-1ug/million cells Immunofluorescence : 0.5-1ug/ml Western Blot : 0.5-2ug/ml Immunohistochemistry (FFPE) : 0.5-1ug/ml
Limitations	This Biotin antibody is available for research use only.



IHC staining of endogenous biotin in FFPE human kidney tissue with Biotin antibody (clone BTN/36). HIER: boil tissue sections in pH 9 10mM Tris with 1mM EDTA for 20 min and allow to cool before testing.



SDS-PAGE analysis of purified, BSA-free Biotin antibody (clone BTN/36) as confirmation of integrity and purity.

Description

It recognizes both the free and protein-conjugated (either soluble or cell bound) form of biotin. This MAb is highly specific to biotin and shows no cross-reaction with other structurally related compounds. It has a very high affinity for biotin and is excellent for use in various amplification techniques. In some applications, localization of biotinylated probes with avidin produces unacceptably high background staining. Anti-biotin antibody may be substituted to decrease this noise.

Application Notes

Optimal dilution of the Biotin antibody should be determined by the researcher.

Immunogen

Biotinylated sheep immunoglobulin was used as the immunogen for the Biotin antibody.

Storage

Aliquot the Biotin antibody and store frozen at -20°C or colder. Avoid repeated freeze-thaw cycles.