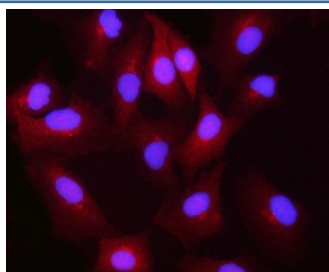


Biliverdin reductase B Antibody / BLVRB (RQ8113)

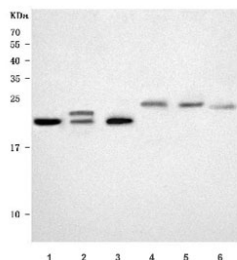
Catalog No.	Formulation	Size
RQ8113	0.5mg/ml if reconstituted with 0.2ml sterile DI water	100 ug

Bulk quote request

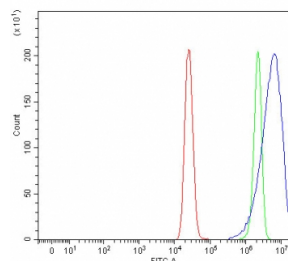
Availability	1-3 business days
Species Reactivity	Human, Mouse, Rat
Format	Antigen affinity purified
Clonality	Polyclonal (rabbit origin)
Isotype	Rabbit IgG
Purity	Antigen affinity purified
Buffer	Lyophilized from 1X PBS with 2% Trehalose
UniProt	P30043
Localization	Cytoplasm
Applications	Western Blot : 0.5-1ug/ml Immunofluorescence : 5ug/ml Flow Cytometry : 1-3ug/million cells Direct ELISA : 0.1-0.5ug/ml
Limitations	This Biliverdin reductase B antibody is available for research use only.



Immunofluorescent staining of FFPE human A549 cells with Biliverdin reductase B antibody (red) and DAPI nuclear stain (blue). HIER: steam section in pH6 citrate buffer for 20 min.



Western blot testing of 1) human K562, 2) human MCF7, 3) human A549, 4) rat liver, 5) rat RH35 and 6) mouse HEPA1-6 cell lysate with Biliverdin reductase B antibody. Predicted molecular weight ~22 kDa, commonly observed at 22-27 kDa.



Flow cytometry testing of fixed and permeabilized human MCF7 cells with Biliverdin reductase B antibody at 1ug/million cells (blocked with goat sera); Red=cells alone, Green=isotype control, Blue= Biliverdin reductase B antibody.

Description

Biliverdin reductase B is a protein that in humans is encoded by the BLVRB gene. Enables biliverdin reductase (NAD(P)+) activity and riboflavin reductase (NADPH) activity. Involved in heme catabolic process.

Application Notes

Optimal dilution of the Biliverdin reductase B antibody should be determined by the researcher.

Immunogen

E. coli-derived recombinant human protein (amino acids K4-D180) was used as the immunogen for the Biliverdin reductase B antibody.

Storage

After reconstitution, the Biliverdin reductase B antibody can be stored for up to one month at 4°C. For long-term, aliquot and store at -20°C. Avoid repeated freezing and thawing.