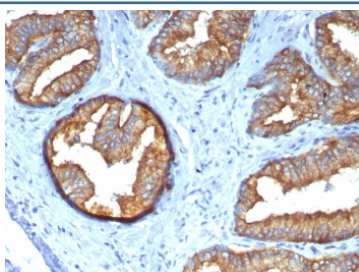


## Beta Tubulin Antibody [clone TUBB/4470] (V4450)

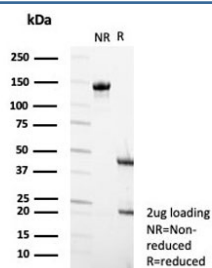
Catalog No.	Formulation	Size
V4450-100UG	0.2 mg/ml in 1X PBS with 0.1 mg/ml BSA (US sourced), 0.05% sodium azide	100 ug
V4450-20UG	0.2 mg/ml in 1X PBS with 0.1 mg/ml BSA (US sourced), 0.05% sodium azide	20 ug
V4450SAF-100UG	1 mg/ml in 1X PBS; BSA free, sodium azide free	100 ug

[Bulk quote request](#)

<b>Availability</b>	1-3 business days
<b>Species Reactivity</b>	Human
<b>Format</b>	Purified
<b>Clonality</b>	Monoclonal (mouse origin)
<b>Isotype</b>	Mouse IgG2b, kappa
<b>Clone Name</b>	TUBB/4470
<b>Purity</b>	Protein A/G affinity
<b>UniProt</b>	P07437
<b>Localization</b>	Cytoplasm
<b>Applications</b>	Immunohistochemistry (FFPE) : 1-2ug/ml for 30 min at RT
<b>Limitations</b>	This Beta Tubulin antibody is available for research use only.



IHC staining of FFPE prostate tissue with Beta Tubulin antibody (clone TUBB/4470).  
 HIER: boil tissue sections in pH 9 10mM Tris with 1mM EDTA for 20 min and allow to cool before testing.



SDS-PAGE analysis of purified, BSA-free Beta Tubulin antibody (clone TUBB/4470) as confirmation of integrity and purity.

## Description

Tubulin is the major constituent of microtubules. It binds two moles of GTP, one at an exchangeable site on the beta chain and one at a non-exchangeable site on the alpha chain. Ubiquitously expressed with highest levels in spleen, thymus and immature brain.

## Application Notes

Optimal dilution of the Beta Tubulin antibody should be determined by the researcher.

## Immunogen

Recombinant full-length human protein was used as the immunogen for the Beta Tubulin antibody.

## Storage

Aliquot the Beta Tubulin antibody and store frozen at -20°C or colder. Avoid repeated freeze-thaw cycles.