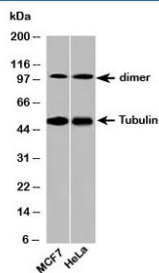


## Beta Tubulin Antibody Loading Control (N1038)

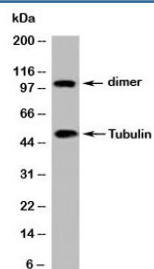
Catalog No.	Formulation	Size
N1038-100UG	0.5 mg/ml in 1X PBS with 0.1 mg/ml BSA (US sourced), 0.05% sodium azide	100 ug
N1038-25UG	0.5 mg/ml in 1X PBS with 0.1 mg/ml BSA (US sourced), 0.05% sodium azide	25 ug

[Bulk quote request](#)

<b>Species Reactivity</b>	Human, Mouse, Rat, Primate, Dog
<b>Format</b>	Purified
<b>Clonality</b>	Polyclonal (rabbit origin)
<b>Isotype</b>	Rabbit IgG
<b>Purity</b>	Protein A Affinity Chromatography
<b>Buffer</b>	1X PBS, pH 7.4
<b>Gene ID</b>	203068
<b>Applications</b>	Western Blot : 2-4ug/ml
<b>Limitations</b>	This <b>beta Tubulin antibody loading control</b> is available for research use only.



Western blot testing of human samples with beta Tubulin antibody at 2ug/ml. Predicted molecular weight: 50-55 kDa.



Western blot testing of mouse samples with beta Tubulin antibody at 2ug/ml. Predicted molecular weight: 50-55 kDa.

## Description

There are five mammalian members of the tubulin family: alpha, beta, gamma, delta, and epsilon. Heterodimers of alpha and beta tubulin make up microtubules, which along with microfilaments and intermediate filaments, make up the cytoskeleton. Due to its ubiquitous presence in mammalian cells, it is often used as a loading control protein in western blot. An antibody to beta-tubulin is used to demonstrate equivalent protein loading in different gel lanes, typically transfected vs mock or non transfected cell lysate.

## Application Notes

Provided assay concentrations are suggestions only, antibody titration may be required for optimal results.

## Immunogen

A recombinant protein fragment from the C-terminal region of human beta tubulin was used as the immunogen for this antibody.

## Storage

Aliquot the loading control antibody and store frozen at -20oC or colder to avoid repeated freeze-thaw cycles.

## Alternate Names

Tubulin beta