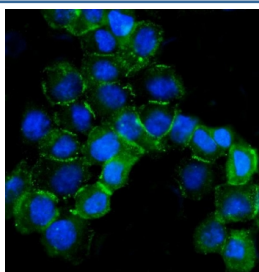


## Beta Catenin Antibody (R30312)

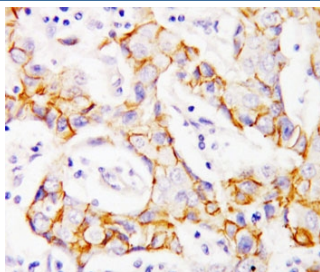
Catalog No.	Formulation	Size
R30312	0.5mg/ml if reconstituted with 0.2ml sterile DI water	100 ug

**Bulk quote request**

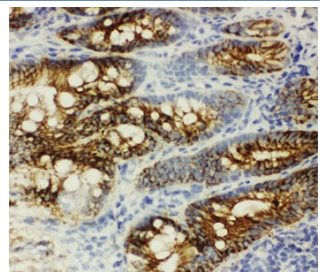
<b>Availability</b>	1-3 business days
<b>Species Reactivity</b>	Human, Mouse, Rat
<b>Format</b>	Antigen affinity purified
<b>Clonality</b>	Polyclonal (rabbit origin)
<b>Isotype</b>	Rabbit IgG
<b>Purity</b>	Antigen affinity
<b>Buffer</b>	Lyophilized from 1X PBS with 2.5% BSA and 0.025% sodium azide/thimerosal
<b>UniProt</b>	P35222
<b>Localization</b>	Cell surface, cytoplasmic
<b>Applications</b>	Western Blot : 0.5-1ug/ml Immunohistochemistry (FFPE) : 0.5-1ug/ml Immunohistochemistry (Frozen) : 0.5-1ug/ml Immunofluorescence : 2-4ug/ml
<b>Limitations</b>	This beta Catenin antibody is available for research use only.



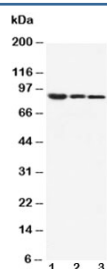
Immunofluorescent staining of FFPE human A431 cells with beta Catenin antibody (green) and DAPI nuclear stain (blue). HIER: steam section in pH6 citrate buffer for 20 min.



IHC-P: beta Catenin antibody testing of human breast cancer tissue



IHC-F: beta Catenin antibody testing of rat intestine tissue



Western blot testing of beta Catenin antibody and Lane 1: MM453; 2: MCF-7; 3: HeLa cell lysate. Predicted molecular weight ~85 kDa, but routinely observed at 90-95 kDa.

## Description

Catenins are proteins found in complexes with cadherin cell adhesion molecules of animal cells. Beta-catenin binds the cytoplasmic domain of some cadherins. It is an adherens junction protein that plays an important role in various aspects of liver biology.

## Application Notes

Titration of the beta Catenin antibody may be required due to differences in protocols and secondary/substrate sensitivity.

## Immunogen

Amino acids 764-781 (DGLPPGDSNQLAWFDTDL) were used as the immunogen for this beta Catenin antibody (100% homologous in human, mouse and rat).

## Storage

After reconstitution, the pAb can be stored for up to one month at 4°C. For long-term, aliquot and store at -20°C. Avoid repeated freezing and thawing.

