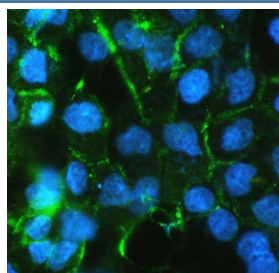


Beta Catenin Antibody [clone 1F6] (RQ4508)

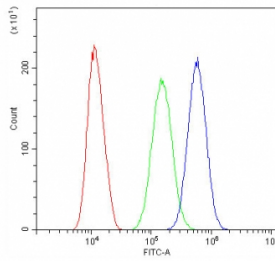
Catalog No.	Formulation	Size
RQ4508	0.5mg/ml if reconstituted with 0.2ml sterile DI water	100 ug

Bulk quote request

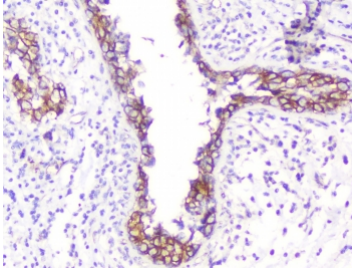
Availability	1-3 business days
Species Reactivity	Human
Format	Purified
Clonality	Monoclonal (mouse origin)
Isotype	Mouse IgG1
Clone Name	1F6
Purity	Protein G affinity
Buffer	Lyophilized from 1X PBS with 2% Trehalose and 0.025% sodium azide
UniProt	P35222
Localization	Cell surface, cytoplasmic, cell junctions, nuclear
Applications	Western Blot : 0.5-1ug/ml Immunohistochemistry (FFPE) : 1-2ug/ml Immunocytochemistry : 2-4ug/ml Immunofluorescence : 2-4ug/ml Flow Cytometry : 1-3ug/million cells
Limitations	This Beta Catenin antibody is available for research use only.



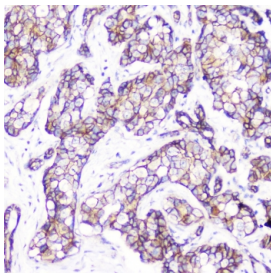
Immunofluorescent testing of FFPE human A431 cells with Beta Catenin antibody. HIER: boil tissue sections in pH6, 10mM citrate buffer, for 10-20 min followed by cooling at RT for 20 min.



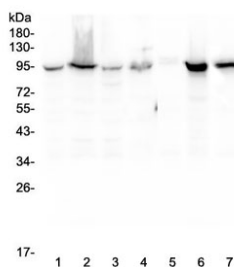
Flow cytometry testing of human SiHa cells with Beta Catenin antibody at 1ug/10⁶ cells (blocked with goat sera); Red=cells alone, Green=isotype control, Blue= Beta Catenin antibody.



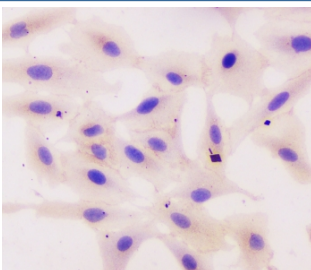
IHC testing of FFPE human breast cancer with Beta Catenin antibody. HIER: boil tissue sections in pH6, 10mM citrate buffer, for 10-20 min followed by cooling at RT for 20 min.



IHC testing of FFPE human breast cancer with Beta Catenin antibody. HIER: boil tissue sections in pH6, 10mM citrate buffer, for 10-20 min followed by cooling at RT for 20 min.



Western blot testing of human 1) HeLa, 2) COLO-320, 3) HepG2, 4) MCF7, 5) SW620, 6) 22RV1 and 7) Jurkat lysate with Beta Catenin antibody. Predicted molecular weight ~85 kDa, but routinely observed at 90-95 kDa.



ICC testing of human A549 cells with Beta Catenin antibody.

Description

Catenins are proteins found in complexes with cadherin cell adhesion molecules of animal cells. The first two catenins that were identified became known as alpha-catenin and beta-catenin. Alpha-catenin can bind to beta-catenin and can also bind actin. Beta-catenin binds the cytoplasmic domain of some cadherins. Beta-catenin is an adherens junction protein. It plays an important role in various aspects of liver biology including liver development (both embryonic and postnatal), liver regeneration following partial hepatectomy. HGF-induced hepatomegaly, liver zonation, and pathogenesis of liver cancer.

Application Notes

Optimal dilution of the Beta Catenin antibody should be determined by the researcher.

Immunogen

Human beta Catenin recombinant protein (amino acids A2-K233) was used as the immunogen for the Beta Catenin antibody.

Storage

After reconstitution, the Beta Catenin antibody can be stored for up to one month at 4oC. For long-term, aliquot and store at -20oC. Avoid repeated freezing and thawing.