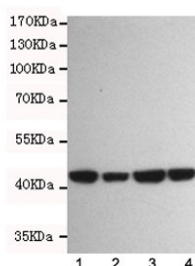


Beta Actin Antibody Loading Control [clone 8F10-G10] (F54001)

Catalog No.	Formulation	Size
F54001-0.1ML	In PBS with 50% glycerol, 0.1mg/ml BSA and 0.02% sodium azide	0.1 ml

Bulk quote request

Availability	1-3 business days
Species Reactivity	Human, Mouse, Rat
Format	Purified
Clonality	Monoclonal (mouse origin)
Isotype	Mouse IgG2b
Clone Name	8F10-G10
Purity	Protein G affinity
UniProt	P60709
Applications	Western Blot : 1:1000
Limitations	This Beta Actin antibody is available for research use only.



Western blot testing of beta Actin antibody at 1:1000 dilution and 1. human Jurkat, 2. human K562, 3. rat C6 and 4. mouse NIH3T3 cell lysates. Predicted molecular weight ~45 kDa.

Description

Actins are highly conserved proteins that are involved in various types of cell motility and are ubiquitously expressed in all eukaryotic cells.

Application Notes

The stated application concentrations are suggested starting points. Titration of the Beta Actin antibody may be required due to differences in protocols and secondary/substrate sensitivity.

Immunogen

A human partial recombinant protein was used as the immunogen for this Beta Actin antibody.

Storage

Store the Beta Actin antibody at -20oC.