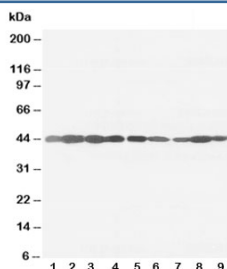


Beta Actin Antibody [clone AC-15] (R30100)

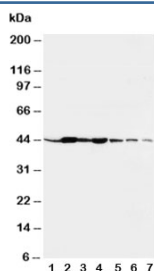
Catalog No.	Formulation	Size
R30100	0.5mg/ml with 1% BSA and 0.01% sodium azide if reconstituted with 0.2ml sterile 1X PBS	100 ug

[Bulk quote request](#)

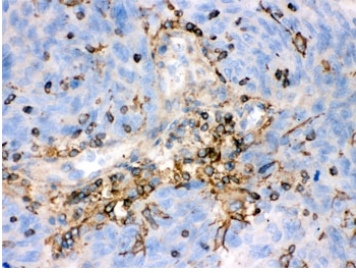
Availability	1-3 business days
Species Reactivity	Human, Mouse, Rat
Format	Ascites
Clonality	Monoclonal (mouse origin)
Isotype	Mouse IgG1
Clone Name	AC-15
Purity	Unpurified ascites
Gene ID	60
Localization	Cytoplasmic, membranous
Applications	Western Blot : 0.25-0.5ug/ml Immunohistochemistry (FFPE) : 0.5-1ug/ml
Limitations	This beta-Actin antibody is available for research use only.



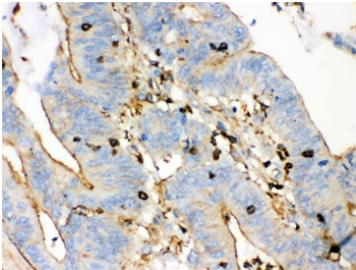
Western blot testing of beta-Actin antibody and rat tissue: ovary (1), testis (2), heart (3), brain (4); and human cell lines, lanes 5: A453; 6: HeLa; 7: SMMC-7721; 8: HT1080; 9: SW620 cell lysate



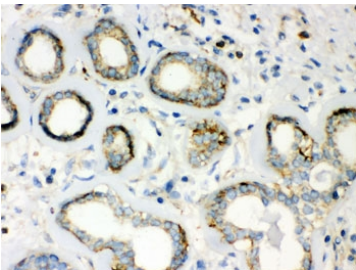
Western blot testing of beta-Actin antibody and rat tissues: liver (1), spleen (2), brain (3), kidney (4) and human cell lines, lane 5: HeLa; 6: SMMC-7721; 7: SGC cell lysate



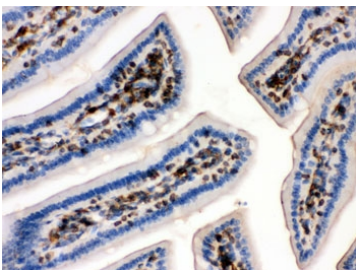
IHC testing of FFPE human lung cancer tissue with beta-Actin antibody. HIER: Boil the paraffin sections in pH 6, 10mM citrate buffer for 20 minutes and allow to cool prior to testing.



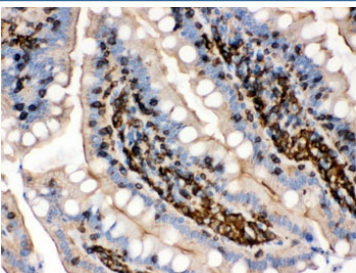
IHC testing of FFPE human intestinal cancer tissue with beta-Actin antibody. HIER: Boil the paraffin sections in pH 6, 10mM citrate buffer for 20 minutes and allow to cool prior to testing.



IHC testing of FFPE human breast cancer tissue with beta-Actin antibody. HIER: Boil the paraffin sections in pH 6, 10mM citrate buffer for 20 minutes and allow to cool prior to testing.



IHC testing of FFPE mouse intestine with beta-Actin antibody. HIER: Boil the paraffin sections in pH 6, 10mM citrate buffer for 20 minutes and allow to cool prior to testing.



IHC testing of FFPE rat intestine with beta-Actin antibody. HIER: Boil the paraffin sections in pH 6, 10mM citrate buffer for 20 minutes and allow to cool prior to testing.

Description

The primary site of action of cytochalasin B on cell motility processes is beta-actin. Habets et al.(1992) generated hybrids that harbor only specific regions of human chromosome 7 and assigned the ACTB locus to 7p15-p12. ACTB and the other assigned beta-actin-related sequences are dispersed over at least four different chromosomes including one locus assigned to the X chromosome. A mutation of the protein that alters depolymerization dynamics is associated with autosomal dominant developmental malformations, deafness, and dystonia.

Application Notes

The stated application concentrations are suggested starting points. Titration of the beta-Actin antibody may be required due to differences in protocols and secondary/substrate sensitivity.

Immunogen

Amino acids DDDIAALVIDNGSGK were used as the immunogen for this beta-Actin antibody.

Storage

After reconstitution, the beta-Actin antibody can be stored for up to one month at 4°C. For long-term, aliquot and store at -20°C. Avoid repeated freezing and thawing.