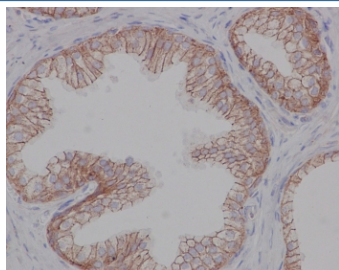


## Beta 2 Adrenergic Receptor Antibody / ADRB2 [clone AE-1] (RQ4480)

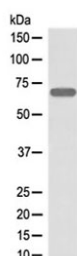
Catalog No.	Formulation	Size
RQ4480	Antibody in PBS with 0.02% sodium azide, 50% glycerol and 0.4-0.5mg/ml BSA	100 ul

[Bulk quote request](#)

Availability	1-2 weeks
Species Reactivity	Human
Format	Purified
Clonality	Rabbit Monoclonal
Isotype	Rabbit IgG
Clone Name	AE-1
Purity	Protein A affinity
UniProt	P07550
Localization	Cell membrane, cytoplasm
Applications	Western Blot : 1:500-1:2000 IHC (FFPE) : 1:50-1:200
Limitations	This Beta 2 Adrenergic Receptor antibody is available for research use only.



IHC testing of FFPE human prostate with Beta 2 Adrenergic Receptor antibody at 2ug/ml. HIER: steamed antigen retrieval with pH6 citrate buffer.



Western blot testing of human A431 cell lysate with Beta 2 Adrenergic Receptor antibody at 0.5ug/ml. Predicted molecular weight ~46 kDa, but commonly observed at up to 85 kDa.

## Description

Beta-adrenergic receptors mediate the catecholamine- induced activation of adenylate cyclase through the action of G proteins. The beta-2-adrenergic receptor binds epinephrine with an approximately 30-fold greater affinity than it does norepinephrine. [UniProt]

## Application Notes

Optimal dilution of the Beta 2 Adrenergic Receptor antibody should be determined by the researcher.

## Immunogen

A synthetic peptide from human beta 2 Adrenergic Receptor was used as the immunogen for the Beta 2 Adrenergic Receptor antibody.

## Storage

Store the Beta 2 Adrenergic Receptor antibody at -20oC.