

## Bcl2L2 Antibody / Bcl-W [clone CPTC-BCL2L2-2] (V7493)

Catalog No.	Formulation	Size
V7493-100UG	0.2 mg/ml in 1X PBS with 0.1 mg/ml BSA (US sourced) and 0.05% sodium azide	100 ug
V7493-20UG	0.2 mg/ml in 1X PBS with 0.1 mg/ml BSA (US sourced) and 0.05% sodium azide	20 ug
V7493SAF-100UG	1 mg/ml in 1X PBS; BSA free, sodium azide free	100 ug

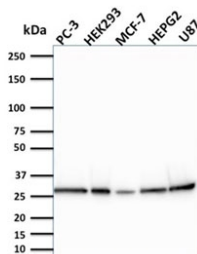
[Bulk quote request](#)

<b>Availability</b>	1-3 business days
<b>Species Reactivity</b>	Human
<b>Format</b>	Purified
<b>Clonality</b>	Monoclonal (mouse origin)
<b>Isotype</b>	Mouse IgG1
<b>Clone Name</b>	CPTC-BCL2L2-2
<b>Purity</b>	Protein G affinity chromatography
<b>UniProt</b>	Q92843
<b>Localization</b>	Cytoplasmic
<b>Applications</b>	Western Blot : 1-2ug/ml
<b>Limitations</b>	This Bcl2L2 antibody is available for research use only.

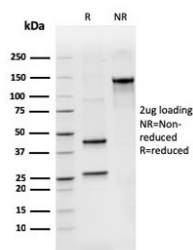
Human Protein Microarray Specificity Validation



Analysis of HuProt(TM) microarray containing more than 19,000 full-length human proteins using Bcl2L2 antibody (clone CPTC-BCL2L2-2). These results demonstrate the foremost specificity of the CPTC-BCL2L2-2 mAb. <BR>Z- and S- score: The Z-score represents the strength of a signal that an antibody (in combination with a fluorescently-tagged anti-IgG secondary Ab) produces when binding to a particular protein on the HuProt(TM) array. Z-scores are described in units of standard deviations (SD's) above the mean value of all signals generated on that array. If the targets on the HuProt(TM) are arranged in descending order of the Z-score, the S-score is the difference (also in units of SD's) between the Z-scores. The S-score therefore represents the relative target specificity of an Ab to its intended target.



Western blot testing of human samples with Bcl2L2 antibody. Expected molecular weight ~26 kDa.



SDS-PAGE analysis of purified, BSA-free Bcl2L2 antibody as confirmation of integrity and purity.

## Description

Bcl2L2, also called BCLW, promotes cell survival. Blocks dexamethasone-induced apoptosis. Mediates survival of postmitotic Sertoli cells by suppressing death-promoting activity of BAX.

## Application Notes

The concentration stated for each application is a general starting point. Variations in protocols, secondaries and substrates may require the Bcl2L2 antibody to be titrated up or down for optimal performance.

1. The prediluted format is supplied in a dropper bottle and is optimized for use in IHC. After epitope retrieval step (if required), drip mAb solution onto the tissue section and incubate at RT for 30 min.

## Immunogen

Full-length recombinant human protein was used as the immunogen for this Bcl2L2 antibody.

## Storage

Store the Bcl2L2 antibody at 2-8°C (with azide) or aliquot and store at -20°C or colder (without azide).