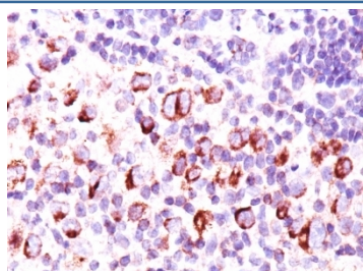


Bcl-X Antibody Cocktail [clone BX006 + 2H12] (V3122)

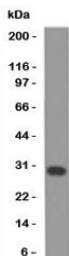
Catalog No.	Formulation	Size
V3122-100UG	0.2 mg/ml in 1X PBS with 0.1 mg/ml BSA (US sourced) and 0.05% sodium azide	100 ug
V3122-20UG	0.2 mg/ml in 1X PBS with 0.1 mg/ml BSA (US sourced) and 0.05% sodium azide	20 ug
V3122SAF-100UG	1 mg/ml in 1X PBS; BSA free, sodium azide free	100 ug
V3122IHC-7ML	Prediluted in 1X PBS with 0.1 mg/ml BSA (US sourced) and 0.05% sodium azide; *For IHC use only*	7 ml

[Bulk quote request](#)

Availability	1-3 business days
Species Reactivity	Human, Mouse, Rat
Format	Purified
Clonality	Monoclonal (mouse origin)
Isotype	Mouse IgG2a, kappa
Clone Name	BX006 + 2H12
Purity	Protein G affinity chromatography
UniProt	Q07817
Localization	Cytoplasmic and cell/nuclear membrane
Applications	Western Blot : 0.5-1ug/ml Immunohistochemistry (FFPE) : 0.5-1ug/ml for 30 min at RT
Limitations	This Bcl-X antibody cocktail is available for research use only.



IHC: Formalin-paraffin Hodgkin's lymphoma stained with Bcl-x antibody (BX006 + 2H12).



Western blot analysis of Jurkat cell lysate using Bcl-X antibody (BX006 + 2H12).

Description

Recognizes a protein of 27kDa, identified as the Bcl-X protein. This mAb cocktail shows no cross-reaction with Bcl-2 or Bax protein. Bcl-X has two isoforms, Bcl-XL (long), a 241 amino acid protein which suppresses cell death. And Bcl-XS (short), a 178 amino acid protein lacking a 63 amino acid domain which functions as a dominant inhibitor of Bcl-2. This mAb reacts with both Bcl-XS and Bcl-XL proteins.

Application Notes

The optimal dilution of the Bcl-X antibody for each application should be determined by the researcher.

1. Staining of formalin-fixed tissues requires boiling tissue sections in 10mM Tris with 1mM EDTA, pH 9.0, for 10-20 min followed by cooling at RT for 20 minutes.
2. The prediluted format is supplied in a dropper bottle and is optimized for use in IHC. After epitope retrieval step (if required), drip mAb solution onto the tissue section and incubate at RT for 30 min.

Immunogen

Amino acids 3-14 (QSNRELVVDFLS) from the human protein were used as the immunogen for this Bcl-X antibody.

Storage

Store the Bcl-X antibody cocktail at 2-8°C (with azide) or aliquot and store at -20°C or colder (without azide).