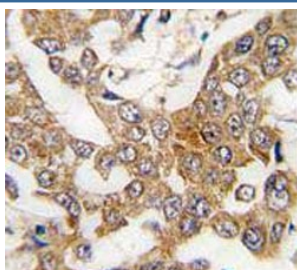


Bcl-W Antibody (BH3 domain specific) (F54369)

Catalog No.	Formulation	Size
F54369-0.4ML	In 1X PBS, pH 7.4, with 0.09% sodium azide	0.4 ml
F54369-0.08ML	In 1X PBS, pH 7.4, with 0.09% sodium azide	0.08 ml

[Bulk quote request](#)

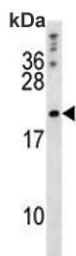
Availability	1-3 business days
Species Reactivity	Human, Mouse
Format	Purified
Clonality	Polyclonal (rabbit origin)
Isotype	Rabbit Ig
Purity	SAS precipitation
UniProt	Q92843
Localization	Cytoplasmic
Applications	Western Blot : 1:500-1:2000 Immunohistochemistry (FFPE) : 1:25
Limitations	This Bcl-W antibody is available for research use only.



IHC testing of FFPE human breast cancer tissue with Bcl-W antibody. HIER: steam section in pH6 citrate buffer for 20 min and allow to cool prior to staining.



Western blot testing of human HL60 cell lysate with Bcl-W antibody. Predicted molecular weight ~21 kDa.



Western blot testing of mouse NIH 3T3 cell lysate with Bcl-W antibody. Predicted molecular weight ~21 kDa.

Description

Bcl-w is a member of the BCL-2 protein family. The proteins of this family form hetero- or homodimers and act as anti- and pro-apoptotic regulators. Expression of this gene in cells has been shown to contribute to reduced cell apoptosis under cytotoxic conditions. Studies of the related gene in mice indicated a role in the survival of NGF- and BDNF-dependent neurons. Mutation and knockout studies of the mouse gene demonstrated an essential role in adult spermatogenesis.

Application Notes

The stated application concentrations are suggested starting points. Titration of the Bcl-W antibody (BH3 Domain Specific) may be required due to differences in protocols and secondary/substrate sensitivity.

Immunogen

A portion of amino acids 24-59 from the human protein was used as the immunogen for the Bcl-W antibody.

Storage

Aliquot the Bcl-W antibody and store frozen at -20°C or colder. Avoid repeated freeze-thaw cycles.