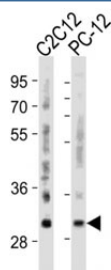


Bcl-2 Antibody (F42666)

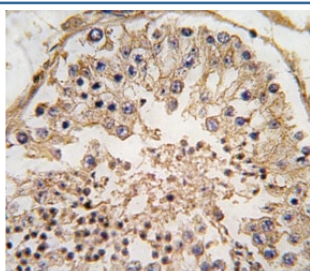
Catalog No.	Formulation	Size
F42666-0.4ML	In 1X PBS, pH 7.4, with 0.09% sodium azide	0.4 ml
F42666-0.08ML	In 1X PBS, pH 7.4, with 0.09% sodium azide	0.08 ml

[Bulk quote request](#)

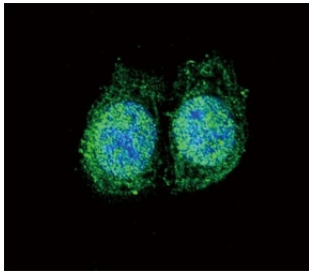
Availability	1-3 business days
Species Reactivity	Human, Mouse, Rat
Predicted Reactivity	Bovine
Format	Purified
Clonality	Polyclonal (rabbit origin)
Isotype	Rabbit Ig
Purity	Purified
UniProt	P10415
Applications	Western Blot : 1:500 IHC (Paraffin) : 1:10-1:50 Immunofluorescence : 1:10-1:50
Limitations	This Bcl-2 antibody is available for research use only.



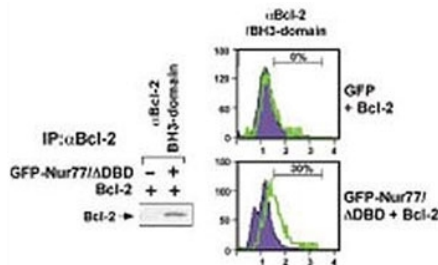
Western blot analysis of lysate from mouse C2C12, rat PC-12 cell line using Bcl-2 antibody diluted at 1:500 for each lane.



IHC analysis of FFPE human testis tissue stained with Bcl-2 antibody



Confocal immunofluorescent analysis of Bcl-2 antibody with HeLa cells followed by Alexa Fluor 488-conjugated goat anti-rabbit IgG (green). DAPI was used as a nuclear counterstain (blue).



(Left) HEK293 cells transfected with a plasmid coding for a DNA-binding domain-deleted construct of Nur77 (GFP-Nur77/dDBD) by using NSJ# F42666 Bcl-2 antibody for IP and a different Bcl-2 antibody for WB. (Right) FACS testing of same transfected cells with NSJ# F42666.

Description

BCL2 is integral outer mitochondrial membrane protein that blocks the apoptotic death of some cells such as lymphocytes. Constitutive expression of BCL2, such as in the case of translocation of BCL2 to Ig heavy chain locus, is thought to be the cause of follicular lymphoma.

Application Notes

Titration of the Bcl-2 antibody may be required due to differences in protocols and secondary/substrate sensitivity.

Immunogen

A portion of amino acids 75-110 (BH3 binding domain) from the human protein was used as the immunogen for this Bcl-2 antibody.

Storage

Aliquot the Bcl-2 antibody and store frozen at -20°C or colder. Avoid repeated freeze-thaw cycles.