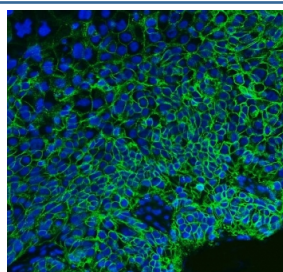


Basigin Antibody / CD147 / Emmprin [clone 6H2B2] (RQ6951)

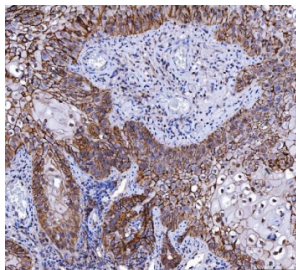
Catalog No.	Formulation	Size
RQ6951	0.5mg/ml if reconstituted with 0.2ml sterile DI water	100 ug

Bulk quote request

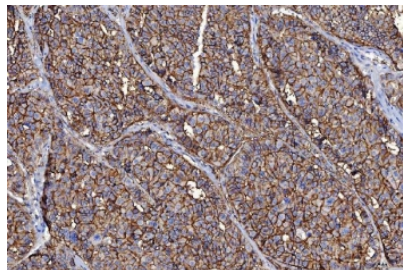
Availability	1-3 business days
Species Reactivity	Human, Mouse
Format	Antigen affinity purified
Clonality	Monoclonal (mouse origin)
Isotype	Mouse IgG2b
Clone Name	6H2B2
Purity	Antigen affinity purified
Buffer	Lyophilized from 1X PBS with 2% Trehalose
UniProt	P35613
Localization	Cell surface
Applications	Western Blot : 0.5-1 ug/ml Immunohistochemistry (FFPE) : 2-5ug/ml Immunofluorescence : 5ug/ml
Limitations	This Basigin antibody is available for research use only.



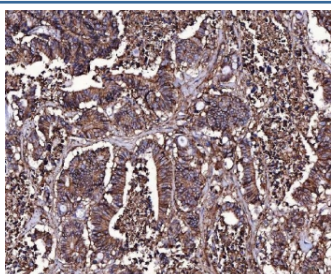
Immunofluorescent staining of FFPE human esophageal squamous carcinoma tissue with Basigin antibody (green) and DAPI nuclear stain (blue). HIER: steam section in pH8 EDTA buffer for 20 min.



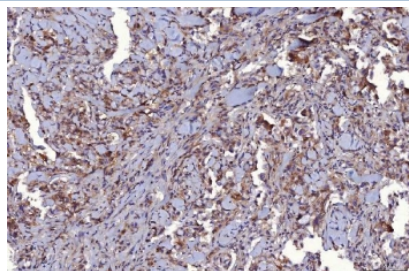
IHC staining of FFPE human laryngeal squamous cell carcinoma tissue with Basigin antibody. HIER: boil tissue sections in pH8 EDTA for 20 min and allow to cool before testing.



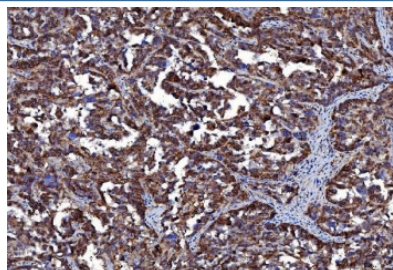
IHC staining of FFPE human liver cancer tissue with Basigin antibody. HIER: boil tissue sections in pH8 EDTA for 20 min and allow to cool before testing.



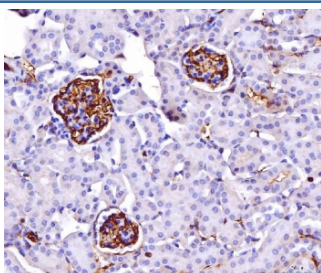
IHC staining of FFPE human colorectal adenocarcinoma tissue with Basigin antibody. HIER: boil tissue sections in pH8 EDTA for 20 min and allow to cool before testing.



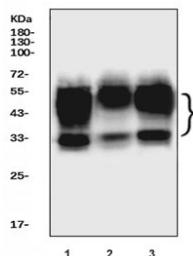
IHC staining of FFPE human breast infiltrating ductal carcinoma tissue with Basigin antibody. HIER: boil tissue sections in pH8 EDTA for 20 min and allow to cool before testing.



IHC staining of FFPE human ovarian cancer tissue with Basigin antibody. HIER: boil tissue sections in pH8 EDTA for 20 min and allow to cool before testing.



IHC staining of FFPE mouse kidney tissue with Basigin antibody. HIER: boil tissue sections in pH8 EDTA for 20 min and allow to cool before testing.



Western blot testing of human 1) HeLa, 2) Jurkat and 3) HepG2 cell lysate with Basigin antibody. Expected molecular weight: 27-66 kDa depending on level of glycosylation.

Description

Emmprin, extracellular matrix metalloproteinase inducer, also known as Basigin (BSG) or cluster of differentiation 147 (CD147) is a protein that in humans is encoded by the BSG gene. The human BSG gene is mapped to 19p13.3. This protein is a determinant for the Ok blood group system. BSG has been shown to be an essential receptor on red blood cells for the malaria parasite. It is a member of the immunoglobulin superfamily, with a structure related to the putative primordial form of the family. As members of the immunoglobulin superfamily, it plays fundamental roles in intercellular recognition involved in various immunologic phenomena, differentiation, and development. BSG is thought also to play a role in intercellular recognition. It also regulates several distinct functions, such as spermatogenesis, expression of the monocarboxylate transporter and the responsiveness of lymphocytes. BSG is a type I integral membrane receptor that has many ligands, including the cyclophilin (CyP) proteins Cyp-A and Cyp-B and certain integrins. It is expressed by many cell types, including epithelial cells, endothelial cells and leukocytes.

Application Notes

Optimal dilution of the Basigin antibody should be determined by the researcher.

Immunogen

Recombinant human protein (amino acids E138-A323) was used as the immunogen for the Basigin antibody.

Storage

After reconstitution, the Basigin antibody can be stored for up to one month at 4°C. For long-term, aliquot and store at -20°C. Avoid repeated freezing and thawing.