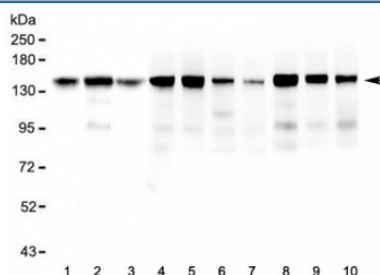


BAG6 Antibody / BAT3 (RQ4907)

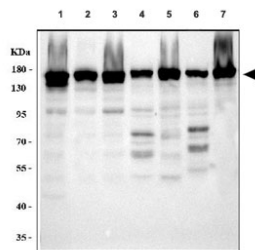
Catalog No.	Formulation	Size
RQ4907	0.5mg/ml if reconstituted with 0.2ml sterile DI water	100 ug

Bulk quote request

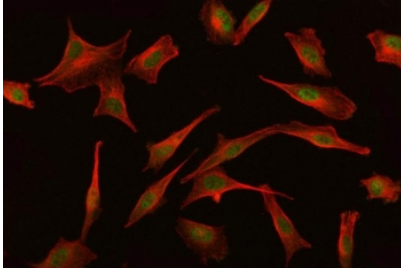
Availability	1-3 business days
Species Reactivity	Human, Mouse, Rat
Format	Antigen affinity purified
Clonality	Polyclonal (rabbit origin)
Isotype	Rabbit IgG
Purity	Antigen affinity purified
Buffer	Lyophilized from 1X PBS with 2% Trehalose and 0.025% sodium azide
UniProt	P46379
Localization	Cytoplasmic, nuclear
Applications	Western Blot : 0.5-1ug/ml Immunohistochemistry (FFPE) : 2-5ug/ml Immunofluorescence : 5ug/ml Flow Cytometry : 1-3ug/10 ⁶ cells Direct ELISA : 0.1-0.5ug/ml
Limitations	This BAG6 Antibody is available for research use only.



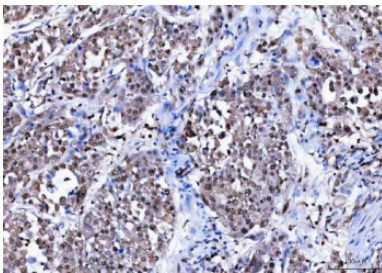
Western blot testing of 1) human HeLa, 2) human ThP-1, 3) human U-87 MG, 4) rat brain, 5) rat heart, 6) rat lung, 7) rat liver, 8) mouse brain, 9) mouse heart and 10) mouse lung lysate with BAG6 antibody at 0.5ug/ml. Predicted molecular weight ~119 kDa but observed at 150-170 kDa.



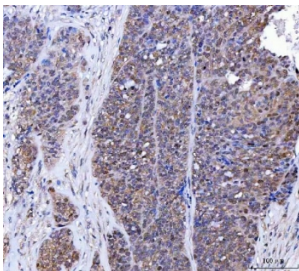
Western blot testing of 1) human HeLa, 2) human U-87 MG, 3) human SH-SY5Y, 4) rat brain, 5) rat C6, 6) mouse brain and 7) mouse Neuro-2a cell lysate with BAG6 antibody. Predicted molecular weight ~119 kDa but observed at 150-170 kDa.



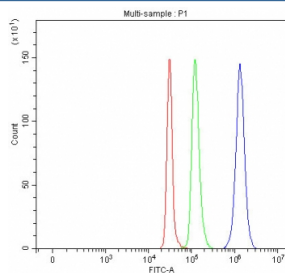
Immunofluorescent staining of FFPE human PC3 cells with BAG6 antibody (green) and anti Beta Tubulin mAb (red). HIER: steam section in pH6 citrate buffer for 20 min.



IHC staining of FFPE human lung cancer tissue with BAG6 antibody. HIER: boil tissue sections in pH8 EDTA for 20 min and allow to cool before testing.



IHC staining of FFPE human ovarian serous adenocarcinoma tissue with BAG6 antibody. HIER: boil tissue sections in pH8 EDTA for 20 min and allow to cool before testing.



Flow cytometry testing of fixed and permeabilized human SH-SY5Y cells with BAG6 antibody at 1ug/10⁶ cells (blocked with goat sera); Red=cells alone, Green=isotype control, Blue= BAG6 antibody.

Description

Large proline-rich protein BAG6 is a protein that in humans is encoded by the BAG6 gene. It is mapped to 6p21.33. This gene was first characterized as part of a cluster of genes located within the human major histocompatibility complex class III region. This gene encodes a nuclear protein that is cleaved by caspase 3 and is implicated in the control of apoptosis. In addition, the protein forms a complex with E1A binding protein p300 and is required for the acetylation of p53 in response to DNA damage. Multiple transcript variants encoding different isoforms have been found for this gene.

Application Notes

Optimal dilution of the BAG6 Antibody should be determined by the researcher.

Immunogen

Amino acids D15-A88 from the human protein were used as the immunogen for the BAG6 Antibody.

Storage

After reconstitution, the BAG6 Antibody can be stored for up to one month at 4oC. For long-term, aliquot and store at -20oC. Avoid repeated freezing and thawing.