

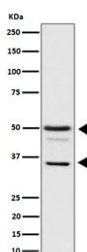
## BAG family molecular chaperone regulator 1 Antibody / BAG1 [clone 28B16] (RQ8326)

Catalog No.	Formulation	Size
RQ8326	Antibody in PBS with 0.02% sodium azide, 50% glycerol and 0.4-0.5mg/ml BSA	100 ul

Recombinant **RABBIT MONOCLONAL**

[Bulk quote request](#)

<b>Availability</b>	1-3 business days
<b>Species Reactivity</b>	Human, Mouse, Rat
<b>Format</b>	Purified
<b>Clonality</b>	Recombinant Rabbit Monoclonal
<b>Isotype</b>	Rabbit IgG
<b>Clone Name</b>	28B16
<b>Purity</b>	Affinity chromatography
<b>UniProt</b>	Q99933
<b>Applications</b>	Western Blot : 1:500-1:2000 Immunohistochemistry (FFPE) : 1:50-1:200 Immunofluorescence : 1:50-1:200
<b>Limitations</b>	This BAG family molecular chaperone regulator 1 antibody is available for research use only.



Western blot testing of human HeLa cell lysate with BAG family molecular chaperone regulator 1 antibody. Predicted molecular weight ~50 kDa (long form), 29-33 (short form).

## Description

Co-chaperone for HSP70 and HSC70 chaperone proteins. Acts as a nucleotide-exchange factor (NEF) promoting the release of ADP from the HSP70 and HSC70 proteins thereby triggering client/substrate protein release. Nucleotide release is mediated via its binding to the nucleotide-binding domain (NBD) of HSPA8/HSC70 where as the substrate release is mediated via its binding to the substrate-binding domain (SBD) of HSPA8/HSC70. [UniProt]

## Application Notes

Optimal dilution of the BAG family molecular chaperone regulator 1 antibody should be determined by the researcher.

## Immunogen

A synthetic peptide derived from human Bag1 was used as the immunogen for the BAG family molecular chaperone regulator 1 antibody.

## Storage

Store the BAG family molecular chaperone regulator 1 antibody at -20oC.