

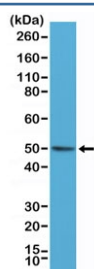
## BAG-1 Antibody / BAG-1L p50 specific [clone RM310] (R20344)

Catalog No.	Formulation	Size
R20344-0.1ML	Antibody in PBS with 50% glycerol, 1% BSA and 0.09% sodium azide	100 ul

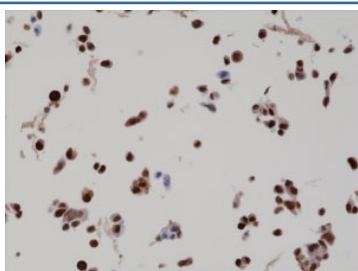
Recombinant **RABBIT MONOCLONAL**

[Bulk quote request](#)

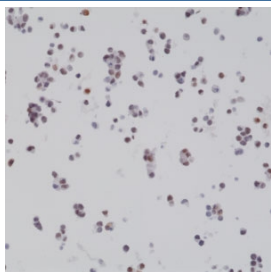
Availability	1-3 business days
Species Reactivity	Human
Format	Purified
Clonality	Recombinant Rabbit Monoclonal
Isotype	Rabbit IgG
Clone Name	RM310
Purity	Protein A purified from animal origin-free supernatant
UniProt	Q99933
Applications	Immunohistochemistry (FFPE) : 1:500-1:2000 Western Blot : 1:1000-1:2000 Immunocytochemistry : 1:200-1:1000
Limitations	This recombinant BAG-1L antibody is available for research use only.



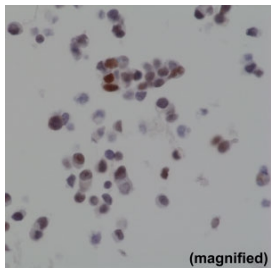
Western blot testing of human HeLa cell lysate with recombinant BAG-1 antibody at 1:1000. Expected molecular weight of the BAG-1L isoform: ~50 kDa.



ICC staining of BAG-1L overexpressing FFPE LNCaP cells with recombinant BAG-1 antibody at 1:2000.



ICC staining of FFPE human 22RV1 cells with recombinant BAG-1 antibody at 1:2000.



ICC staining of FFPE human 22RV1 cells with recombinant BAG-1 antibody at 1:2000.

## Description

This antibody reacts to the BAG-1L (p50) isoform of human BAG-1. It does not cross react to BAG-1M or BAG-1S.

## Application Notes

The stated application concentrations are suggested starting points. Titration of the recombinant BAG-1 antibody may be required due to differences in protocols and secondary/substrate sensitivity.

## Immunogen

A peptide corresponding to residues near the N-terminus of the human BAG-1L isoform was used as the immunogen for the BAG-1 antibody.

## Storage

Store the recombinant BAG-1 antibody at -20°C.