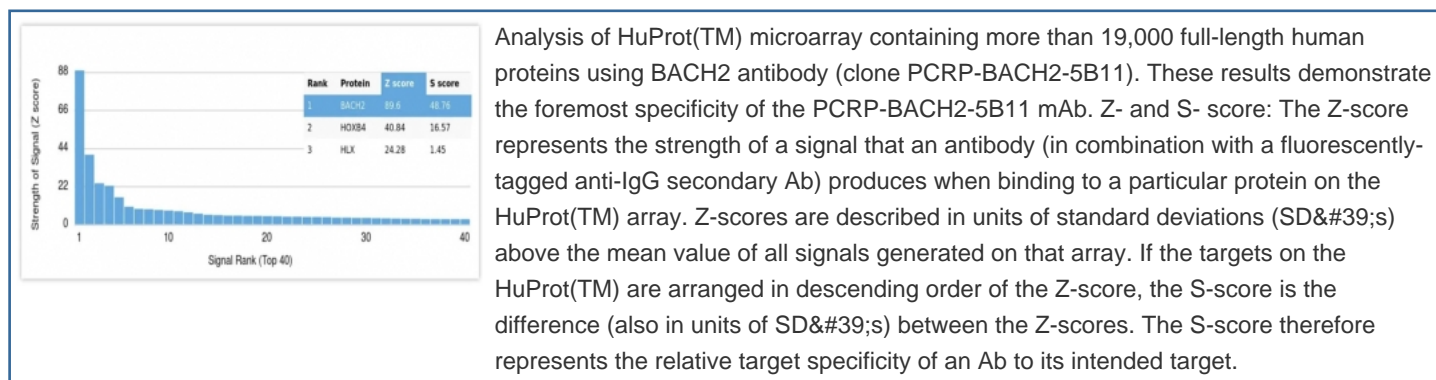


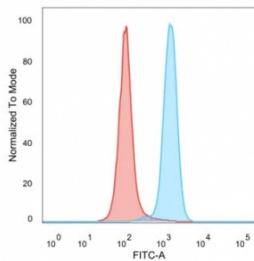
## BACH2 Antibody / BTB and CNC homology 2 [clone PCRP-BACH2-5B11] (V5787)

Catalog No.	Formulation	Size
V5787-100UG	0.2 mg/ml in 1X PBS with 0.1 mg/ml BSA (US sourced), 0.05% sodium azide	100 ug
V5787-20UG	0.2 mg/ml in 1X PBS with 0.1 mg/ml BSA (US sourced), 0.05% sodium azide	20 ug
V5787SAF-100UG	1 mg/ml in 1X PBS; BSA free, sodium azide free	100 ug

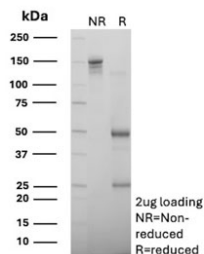
[Bulk quote request](#)

<b>Availability</b>	1-3 business days
<b>Species Reactivity</b>	Human
<b>Format</b>	Purified
<b>Clonality</b>	Monoclonal (mouse origin)
<b>Isotype</b>	Mouse IgG2a, kappa
<b>Clone Name</b>	PCRP-BACH2-5B11
<b>Purity</b>	Protein G affinity
<b>UniProt</b>	Q9BYV9
<b>Localization</b>	Nucleus
<b>Applications</b>	Flow Cytometry : 1-2ug/million cells
<b>Limitations</b>	This BACH2 antibody is available for research use only.





Flow cytometry staining of PFA-fixed human HeLa cells with BACH2 antibody (clone PCRP-BACH2-5B11); Red=isotype control, Blue= BACH2 antibody.



SDS-PAGE analysis of purified, BSA-free BACH2 antibody (clone PCRP-BACH2-5B11) as confirmation of integrity and purity.

## Description

Enables sequence-specific double-stranded DNA binding activity. Involved in primary adaptive immune response involving T cells and B cells. Located in cytosol and nucleoplasm. Implicated in immunodeficiency 60. Transcriptional regulator that acts as a repressor or activator. Binds to Maf recognition elements (MARE). Plays an important role in coordinating transcription activation and repression by MAFK. Induces apoptosis in response to oxidative stress through repression of the antiapoptotic factor HMOX1. Positively regulates the nuclear import of actin. Is a key regulator of adaptive immunity, crucial for the maintenance of regulatory T-cell function and B-cell maturation.

## Application Notes

Optimal dilution of the BACH2 antibody should be determined by the researcher.

## Immunogen

A portion of amino acids 11-132 from human BACH2 protein was used as the immunogen for the BACH2 antibody.

## Storage

Aliquot the BACH2 antibody and store frozen at -20oC or colder. Avoid repeated freeze-thaw cycles.